

FAX-B360IF

PARTS CATALOG

REVISION 0

FAX-B360IF	H12-0352	120V
FXB-CASSETTE 3 A4	H12-3253	

Canon

APR. 1995

HY8-39A4-000

FAX-B360IF

PARTS CATALOG

Canon

Application

This manual has been issued by Canon Inc. for qualified person to learn technical theory, installation, maintenance, and repair of products. This manual covers all localities where the products are sold. For this reason, there may be information in this manual that does not apply to your locality.

Corrections

This manual could include technical inaccuracies or typographical errors due to improvements or changes in the products. When changes occur in applicable products or in the content of this manual, Canon will release technical information as the need arises. In the event of major changes in the contents of this manual over a long or short period, Canon will issue a new editions of this manual.

The following paragraph does not apply to any countries where such provisions are inconsistent with local law.

Trademarks

The product names and company names described in this manual are the registered trademarks of the individual companies.

Copyright

This manual is copyrighted with all rights reserved. Under the copyright laws, this manual may not be copied, reproduced or translated into another language, in whole or in part, without the written consent of Canon Inc.

Copyright © 1995 by Canon Inc.
Office Imaging Products Technical Support Dept. 3
CANON INC.
30-2 Shimomaruko 3-Chome, Ohta-ku, Tokyo 146, Japan

DTP Systems

This manual was produced on Apple® Macintosh® II ci personal computer and Canon SUPER LASER SHOT B406 PS laser beam printer.

Parts layout illustrations were created using Aldus® FreeHand 3.1J.

Documents and page layouts were created using QuarkXpress® 3.1J.

Parts lists were created using Helix Technology® Helix Express® and converted to PICT format by Solutions, Inc.® Super GLUE II™.

I. CONTENTS

1. ILLUSTRATION INDEX
2. PARTS LAYOUT & PARTS LIST
3. SCREWS & WASHERS LIST
4. TOOL
5. GUIDE TO REPLACEMENT
6. NUMERICAL INDEX

II. ABOUT THIS MANUAL

1. ILLUSTRATION INDEX

For illustration index, the parts layout illustrations in this parts catalog are listed in abbreviated form in order of illustration number to identify the pages they appear on. To find an illustration of a part, see the ILLUSTRATION INDEX.

2. PARTS LAYOUT & PARTS LIST

Parts layout illustration

a) Parts search

Find a part from the parts layout illustration and find its key number from the parts list to identify the part number and name. For screws, nuts, washers, lock washers, pins, spacers, see 3. SCREWS & WASHERS LIST.

Note: If parts have the same or similar shape but different specifications, their key number is assigned to several part numbers and names in the parts list.

b) Parts replacement procedure

The parts layout illustrations are arranged according to the disassembly procedure of the product.

The parts require carefully work are marked "See page 5-x". So refer to the corresponded page "5" (GUIDE TO REPLACEMENT).

The letters (A), (B) etc.) in the illustration indicate the connection locations of cables and screws.

Parts list

a) FIGURE & KEY No.

The FIGURE & KEY No. column corresponds to the key numbers assigned to the parts in the parts layout illustration.

It also corresponds to the part locations printed on the PC board.

b) PART NUMBER

The PART NUMBER column gives the part numbers corresponding to the key numbers. To order a part, indicate the part number clearly.

Note: Parts marked NPN are not service parts.

c) RANK

The service parts with N in the RANK column are order parts.

d) QTY

The QTY column gives the number of parts in the corresponding components layout illustration.

e) DESCRIPTION

The DESCRIPTION column gives the part names in English.

To order a part, indicate the part name, too.

3. SCREWS & WASHERS LIST

This is a list of screws, nuts, washers, lock washers, pins, and spacers.

4. TOOL

This is a list of tools used for servicing products.

5. GUIDE TO REPLACEMENT

Explains the special cares and cautions for the parts replacement.

6. NUMERICAL INDEX

All the parts listed in this parts catalog are arranged in order of part number. You can identify part locations and names from the NUMERICAL INDEX..

This page intentionally left blank

1. ILLUSTRATION INDEX

FIGURE 1 PACKAGE CONTENTS

See Page
2 - 1

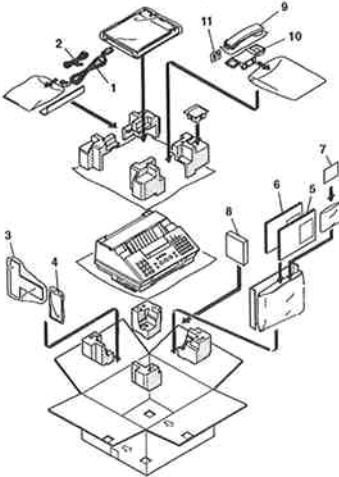


FIGURE 2 UPPER COVER ASS'Y

See Page
2 - 3

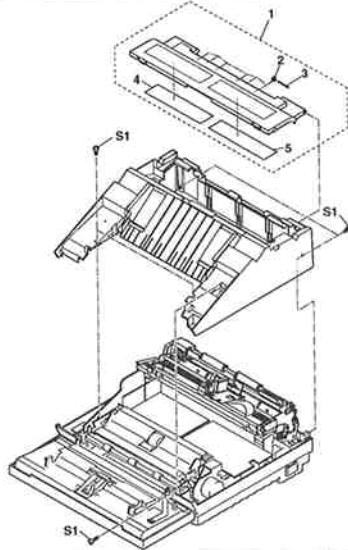
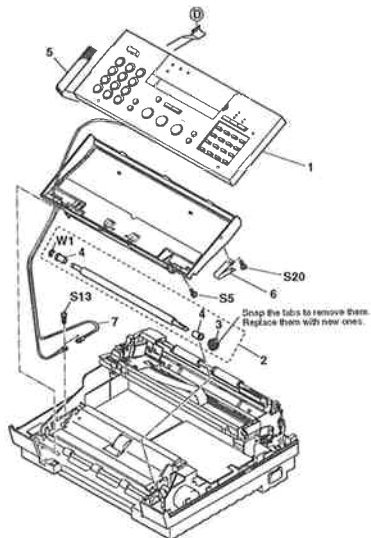
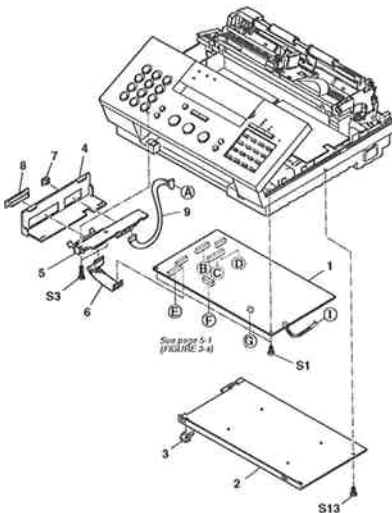


FIGURE 3 SCNT & INTERFACE BOARD ASS'Y

See Page
2 - 5

FIGURE 4 OPERATION PANEL ASS'Y & ADF ASS'Y, UPPER

See Page
2 - 7



<p>FIGURE 5 PRINTER ASS'Y</p>	<p>See Page 2 - 9</p>	<p>FIGURE 6 ADF, LOWER</p>	<p>See Page 2 - 11</p>
<p>FIGURE 7 NCU & DRIVER BOARD ASS'Y, POWER SUPPLY</p>	<p>See Page 2 - 13</p>	<p>FIGURE 8 RECORDING PAPER GUIDE</p>	<p>See Page 2 - 15</p>

FIGURE 9 MAIN FRAME

See Page
2 - 17

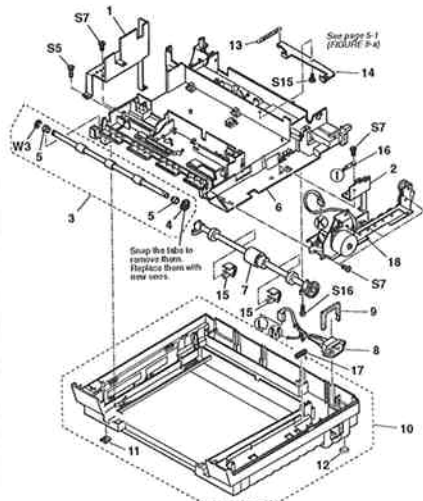


FIGURE 10 UPPER COVER

See Page
2 - 19

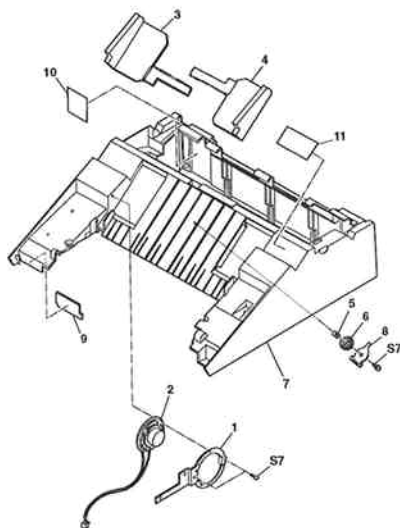


FIGURE 11 OPERATION PANEL

See Page
2 - 21

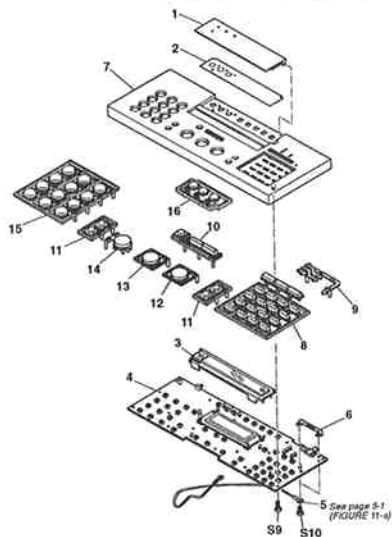


FIGURE 12 ADF UPPER

See Page
2 - 23

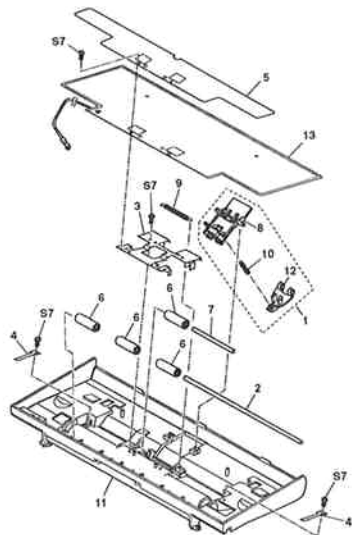


FIGURE 13 SEPARATION ROLLER & FEED ROLLER

See Page
2 - 25

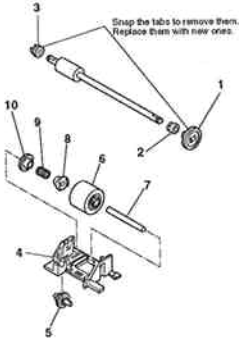


FIGURE 14 PICKUP ROLLER

See Page
2 - 27

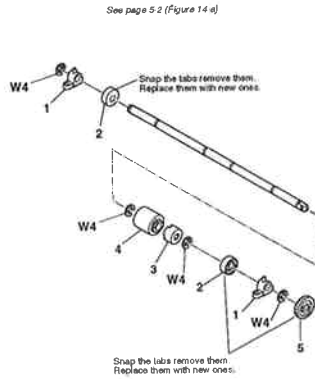


FIGURE 15 DRIVE GEARS

See Page
2 - 29

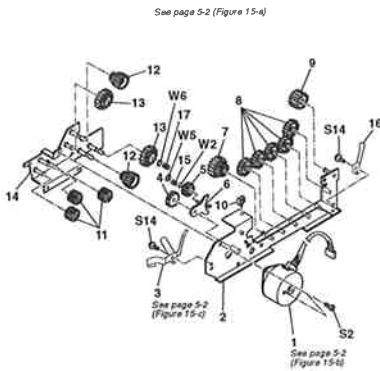


FIGURE 16 PRINTER (1)

See Page
2 - 31

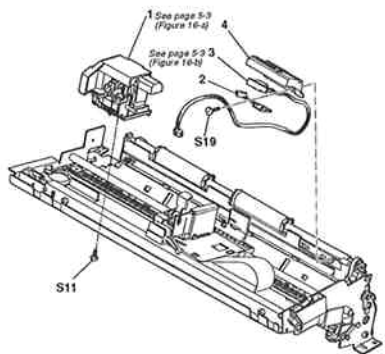


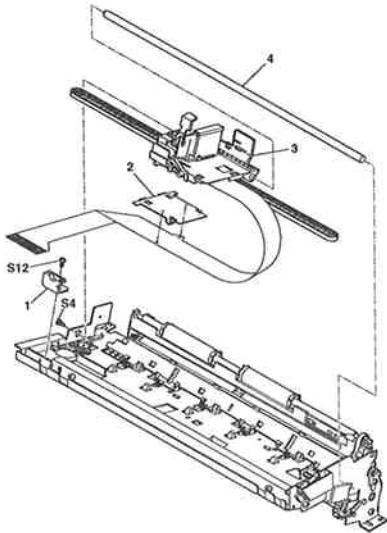
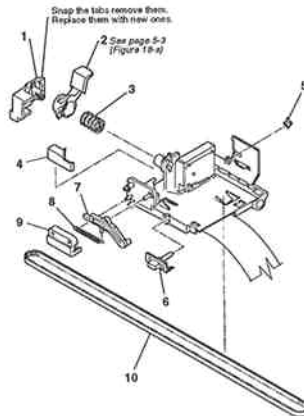
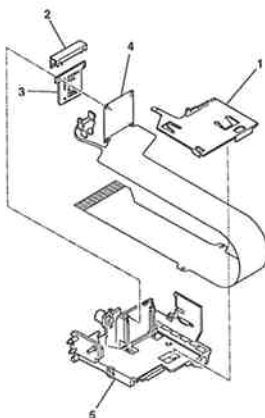
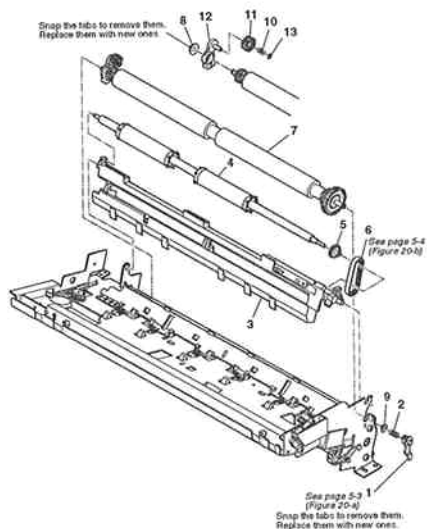
FIGURE 17 PRINTER (2)See Page
2 - 33**FIGURE 18** CARRIAGE (1)See Page
2 - 35**FIGURE 19** CARRIAGE (2)See Page
2 - 37**FIGURE 20** PAPER FEED SECTION
(1)See Page
2 - 39

FIGURE 21 PAPER FEED SECTION
(2)

See Page
2 - 41

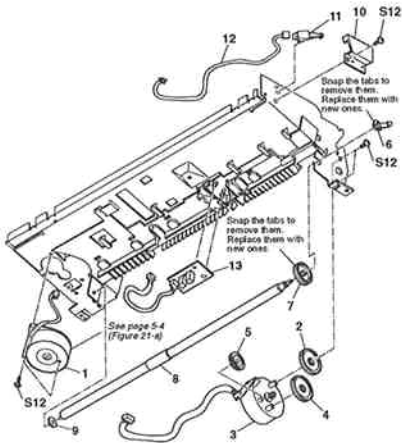


FIGURE 22 CARRIAGE GUIDE & PRESSUER PLATE

See Page
2 - 43

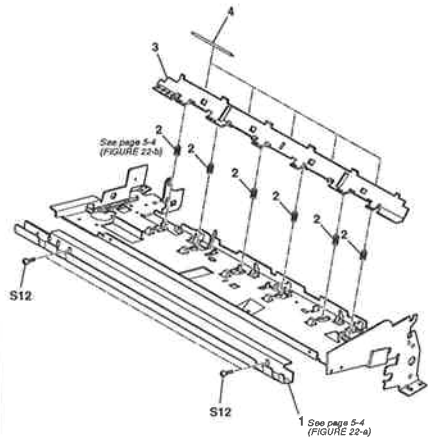


FIGURE 23 PRINTER FRAME

See Page
2 - 45

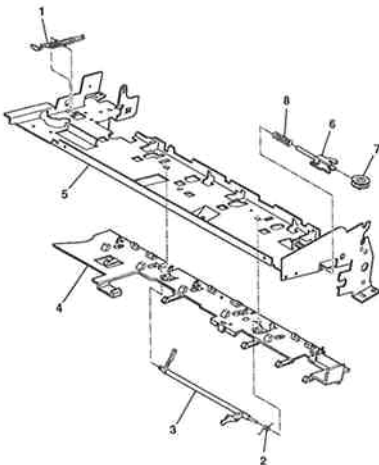


FIGURE 24 RECORDING PAPER CASSETTE

See Page
2 - 47

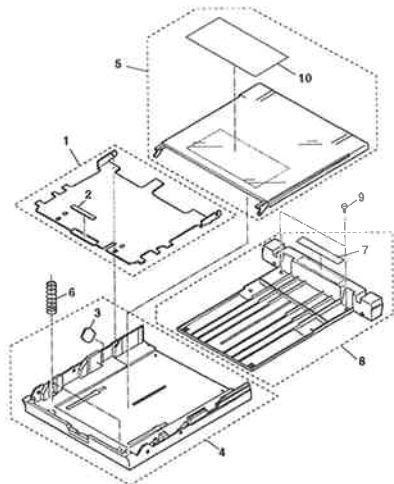


FIGURE 25 FUSE, POWER SUPPLY

See Page
2 - 49

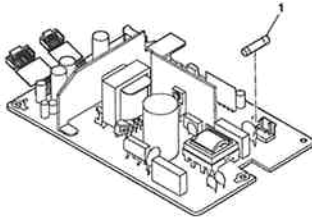


FIGURE 26 SCNT BOARD ASS'Y

See Page
2 - 51

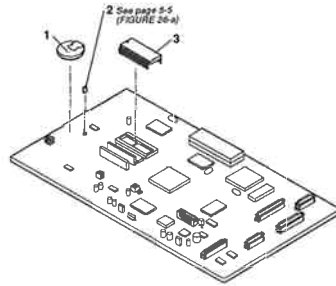


FIGURE 27 HANDSET

See Page
2 - 53

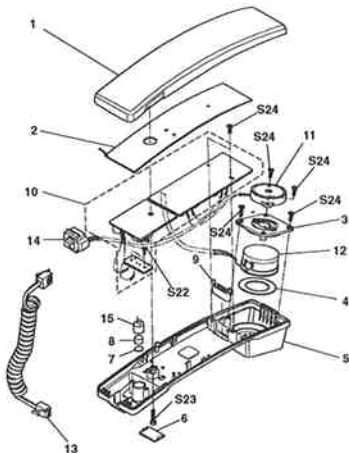


FIGURE 28 FXB-CASSETTE 3
A4/200 PACKAGE
CONTENTS

See Page
2 - 55

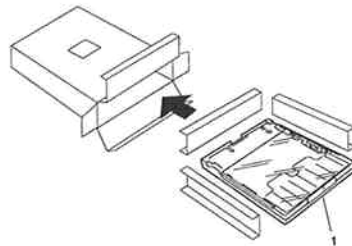


FIGURE 29 FXB-CASSETTE 3
A4/200 RECORDING
PAPER CASSETTE

See Page
2 - 57

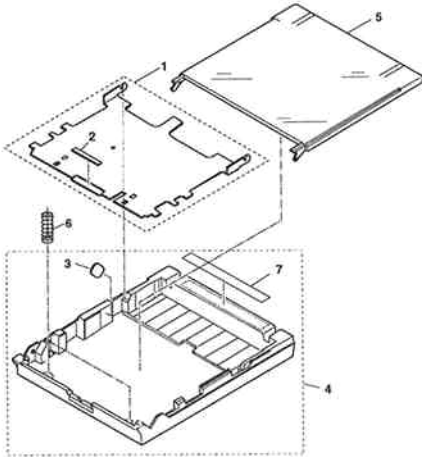


FIGURE 30 TOOL

See Page
4 - 1



This page intentionally left blank

2. PARTS LAYOUT & PARTS LIST

FIGURE 1 PACKAGE CONTENTS

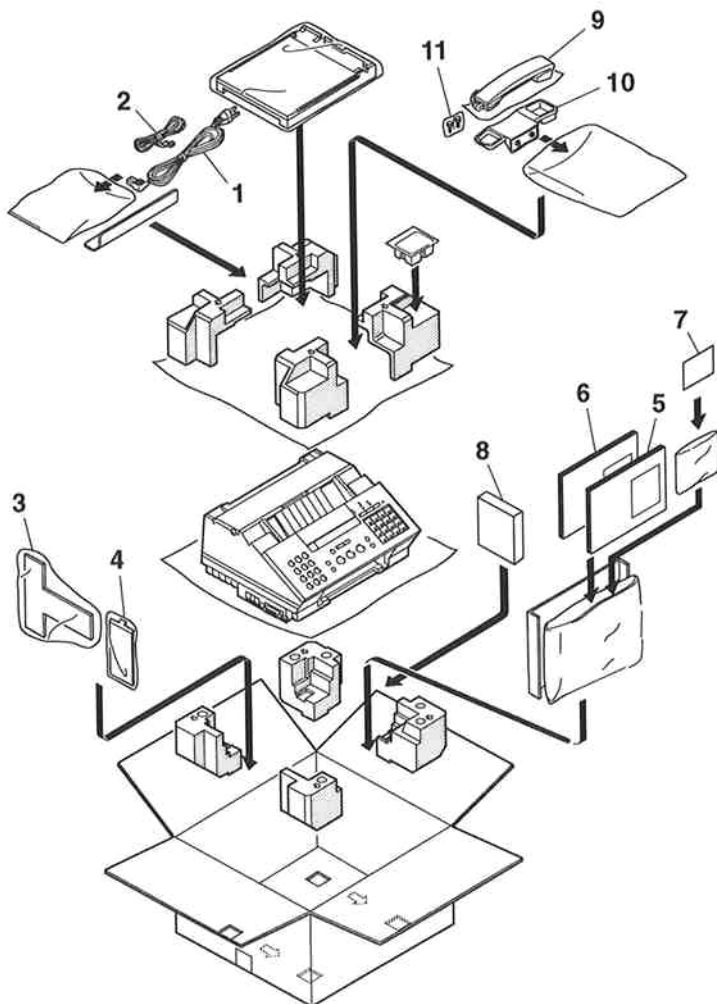


FIGURE & KEY No.	PART No.	RANK	QTY	DESCRIPTION	REMARKS
1- 1	WT3-0057-000		1	POWER SUPPLY CORD 125V	
2	HH2-2484-000		1	MODULAR LINE CORD, 2W	
3	HB1-1010-000		1	TRAY, RECORDING PAPER	
4	HB1-0212-000		1	TRAY, DOCUMENT	
5	HT1-2045-000	N	1	INSTRUCTION BOOK (ENG)	
6	HT1-2047-000	N	1	INSTRUCTION BOOK, DRIVER(ENG)	
7	HB1-1395-000		1	SHEET, ONE-TOUCH DIAL	
8	HG5-0604-000		1	DRIVER SOFTWARE	
9	HG1-2185-050		1	HANDSET ASS'Y (USA, AG)	
10	HA2-2128-000		1	HOLDER, HANDSET	
11	XA9-0718-000		2	SCREW, HANDSET HOLDER	

FIGURE 2 UPPER COVER ASS'Y

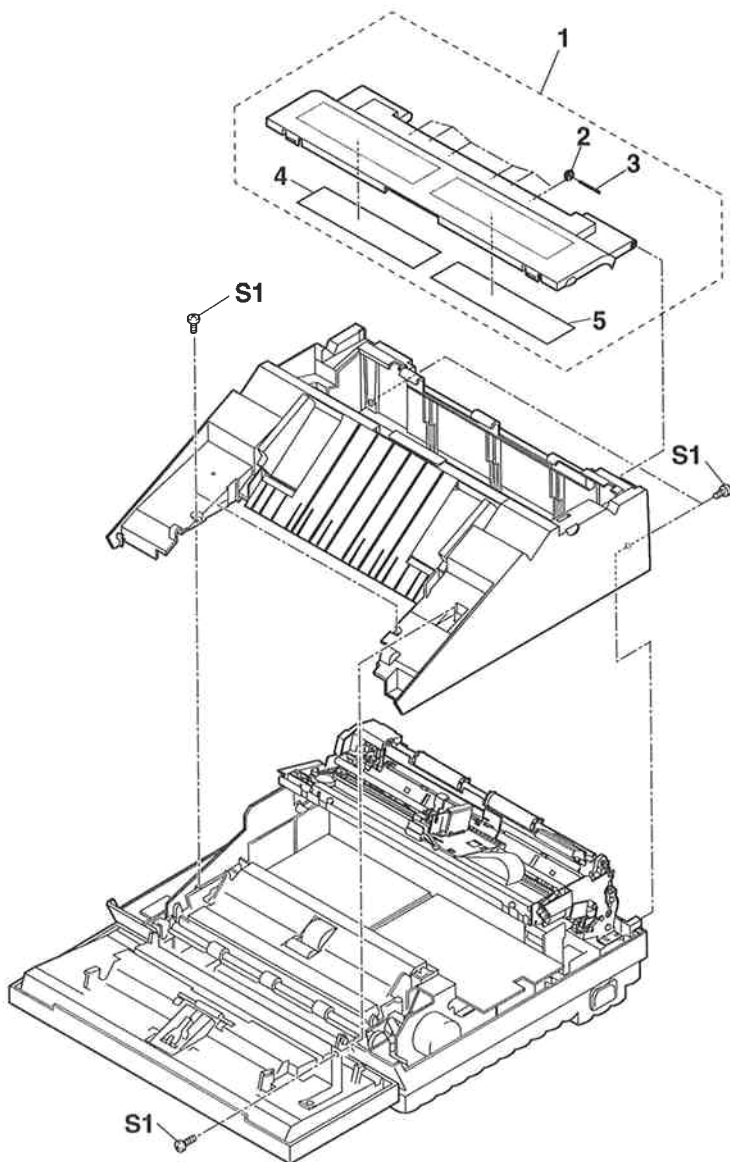


FIGURE & KEY No.	PART No.	R A N K	Q T Y	DESCRIPTION	REMARKS
2- 1	HG5-0472-000		1	PRINTER COVER ASSY	
2	QB1-0517-000		6	SPUR	
3	QB1-0518-000		6	SPUR SHAFT	
4	HA2-2726-000		1	LABEL, CARTRIDGE U1	
5	HA2-2725-000		1	LABEL, CARTRIDGE U2	

FIGURE 3 SCNT & INTERFACE BOARD ASS'Y

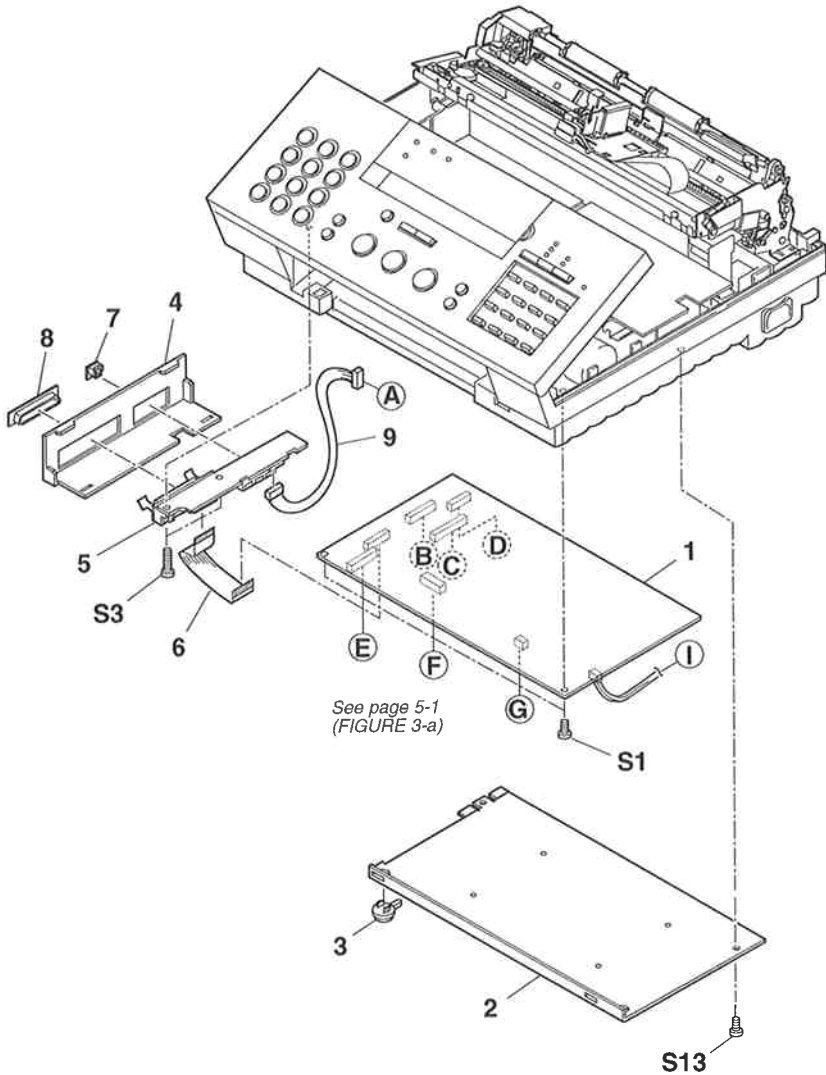


FIGURE & KEY No.	PART No.	R A N K	Q T Y	DESCRIPTION	REMARKS
3- 1	HG1-4224-000		1	SCNT BOARD ASSY	
2	HB1-0214-080		1	COVER, BOTTOM	
3	HF5-0011-030	N	2	RUBBER FOOT UNIT	
4	HB1-0213-000		1	COVER, MODULAR	
5	HG1-4227-000		1	INTERFACE BOARD ASS'Y	
6	HH2-2350-000		1	FLAT CABLE	
7	WS9-5038-000		1	SPACER, MODULAR	
8	QA2-0503-000		1	CAP. CONNECTOR	
9	HH2-2297-000		1	CABLE WITH CONNECTOR, 7P	

**FIGURE 4 OPERATION PANEL ASS'Y & ADF ASS'Y,
UPPER**

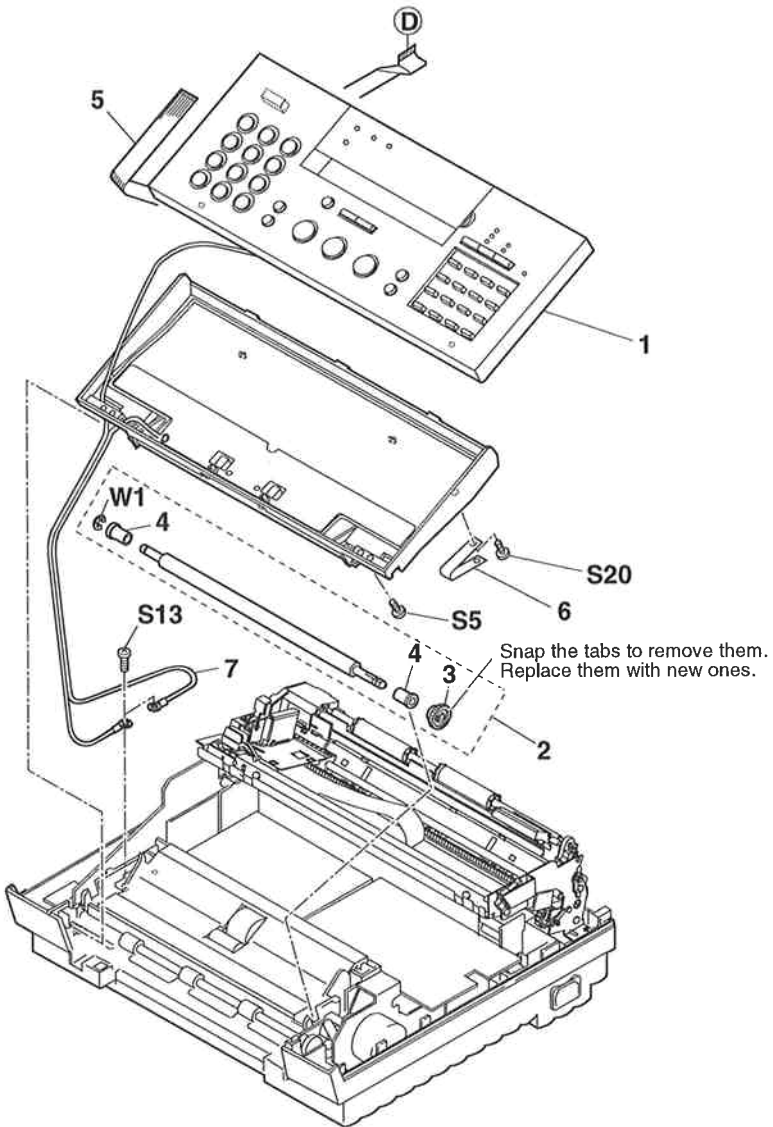


FIGURE & KEY No.	PART No.	R A N K	Q T Y	DESCRIPTION	REMARKS
4 - 1	HG5-0456-000		1	OPERATION PANEL ASSY	
2	HG5-0064-000		1	CS ROLLER ASSY	
3	HS5-0024-000		1	GEAR, 21T	
4	HS5-1006-000		2	BUSHING	
5	HH2-2349-020		1	FALT CABLE	
6	HB1-0262-000		1	BELT, STOPPER	
7	HH2-2487-000		1	WIRE, GROUND	

FIGURE 5 PRINTER ASS'Y

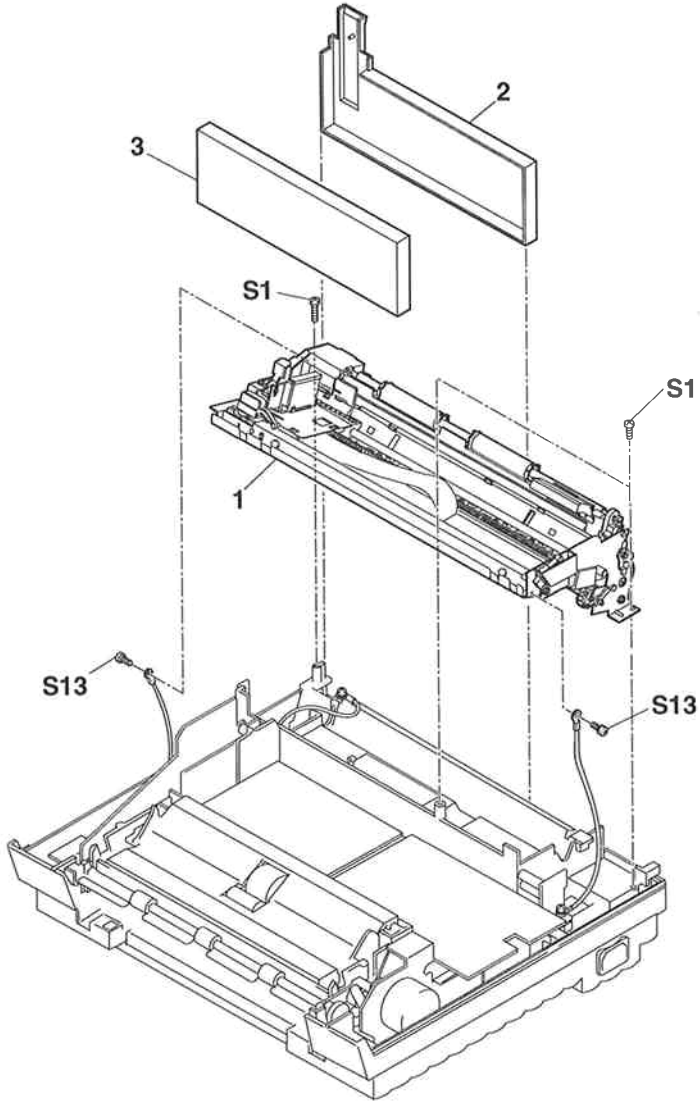


FIGURE & KEY No.	PART No.	R A N K	Q T Y	DESCRIPTION	REMARKS
5- 1	HG5-0071-000		1	PRINTER ASS'Y	
2	HB1-0319-020		1	TRAY, WASTE INK	
3	HB1-0320-000		1	ABSORBER, WASTE INK	

FIGURE 6 ADF, LOWER

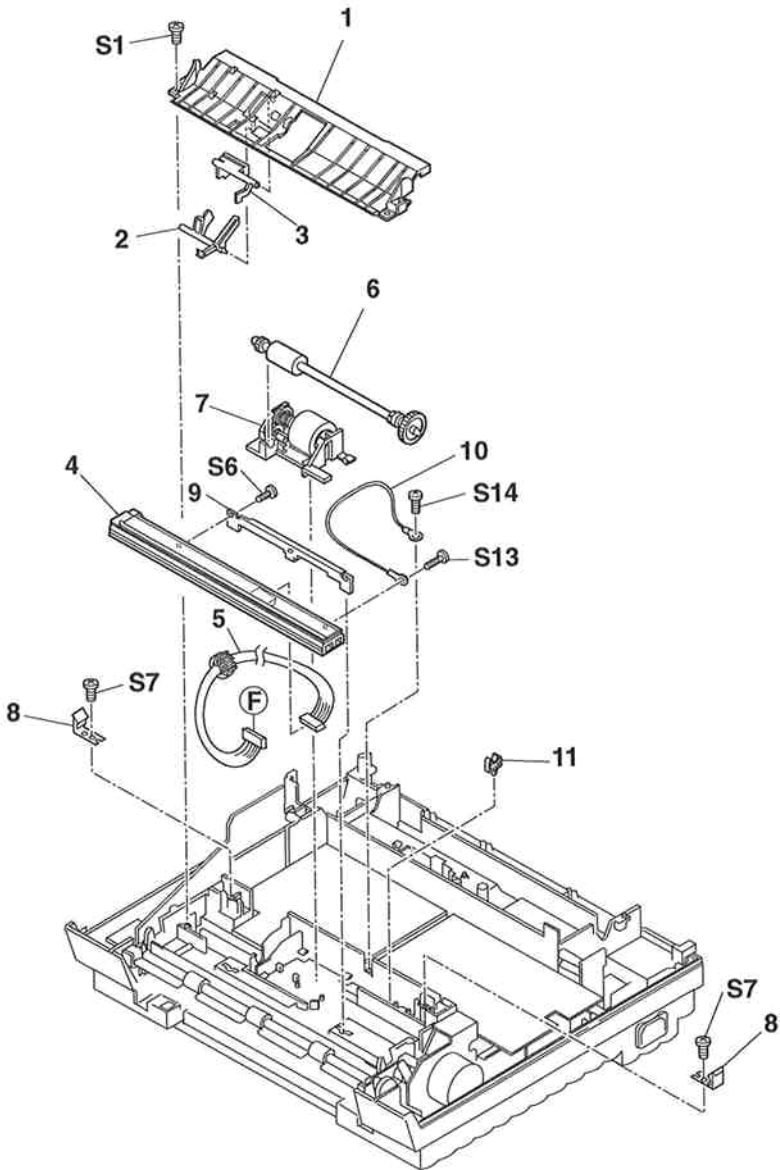


FIGURE & KEY No.	PART No.	R A N K	Q T Y	DESCRIPTION	REMARKS
6 - 1	HB1-0231-000		1	COVER, DOCUMENT GUIDE, LOWER	
2	HB1-0233-000		1	ARM, DETECTION	
3	HB1-0232-000		1	ARM, DETECTION	
4	HH7-2115-000		1	CONTACT SENSOR	
5	HH2-2351-000		1	CABLE WITH CONNECTER, 10P	
6	HG5-0063-000		1	FEED ROLLER ASS'Y	
7	HG5-0058-020		1	SEPARATION ROLLER ASS'Y	
8	HF1-0913-000		2	LOCK, OPERATION PANEL UNIT	
9	HB1-1357-000	N	1	PLATE, POSITIONING	
10	HH2-2344-000		1	CABLE WITH RING TONGUE	
11	WT2-0387-000		1	CLAMP	

FIGURE 7 NCU & DRIVER BOARD ASS'Y, POWER SUPPLY

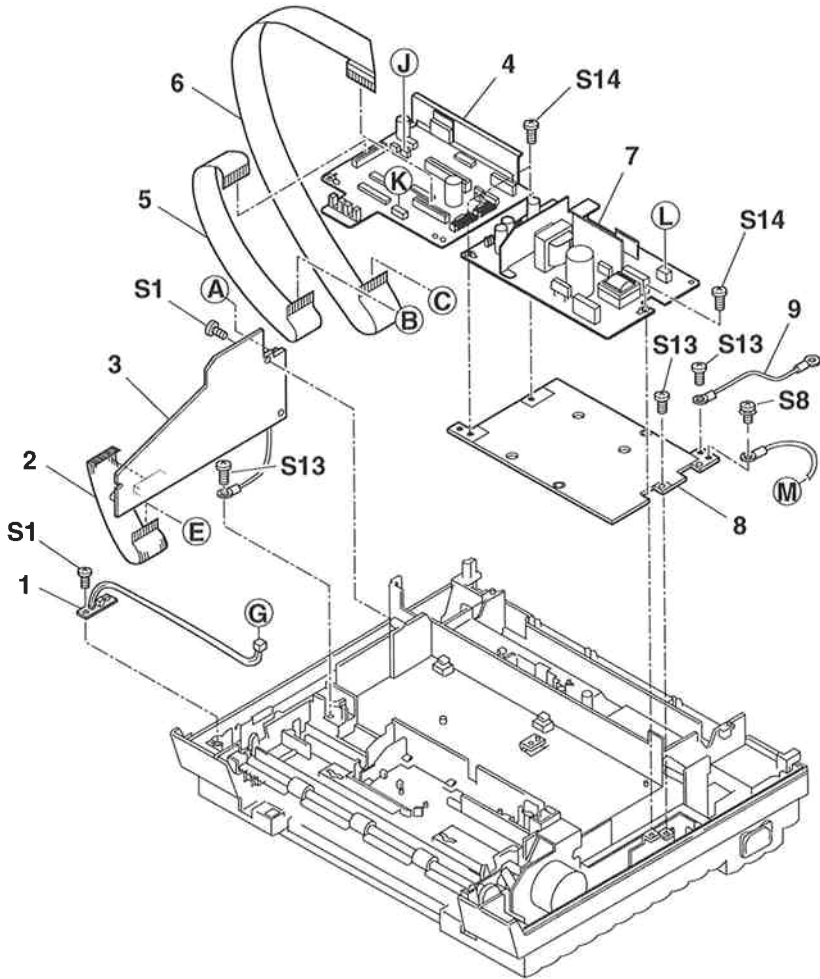


FIGURE & KEY No.	PART No.	R A N K	Q T Y	DESCRIPTION	REMARKS
7- 1	HG1-4090-000		1	RELAY BOARD ASS'Y	
2	HH2-2348-000		1	FLAT CABLE	
3	HG1-4085-000		1	NCU BOARD ASS'Y	
4	HG1-4084-000		1	DRIVER BOARD ASS'Y	
5	HH2-2512-000		1	FLAT CABLE	
6	HH2-2511-000		1	FLAT CABLE	
7	HH3-5269-000		1	POWER SUPPLY UNIT	
8	HF5-0015-000	N	1	PLATE, GROUNDING	
9	HH2-2342-000		1	CABLE WITH RING TONGUE	

FIGURE 8 RECORDING PAPER GUIDE

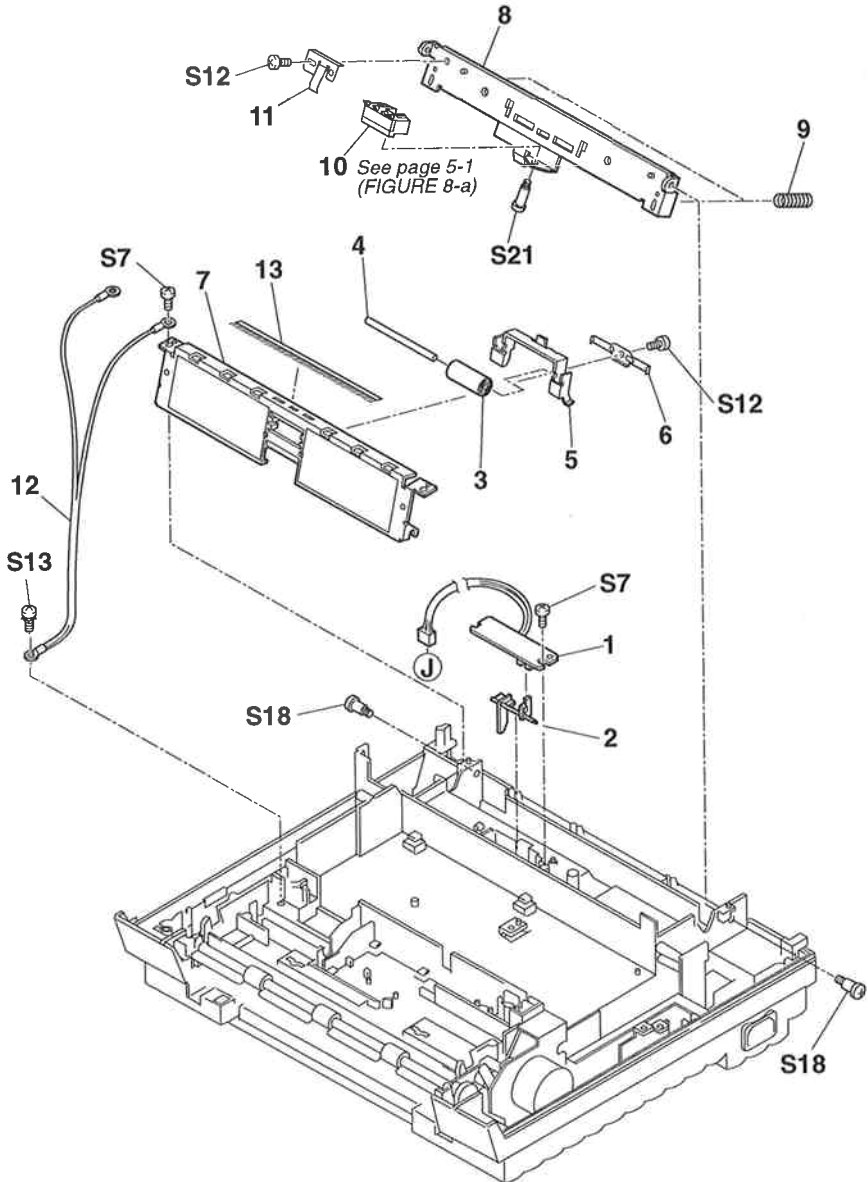


FIGURE & KEY No.	PART No.	R A N K	Q T Y	DESCRIPTION	REMARKS
8 - 1	HG1-4087-000		1	SENSOR BOARD ASSY	
2	HB1-0224-000		1	ARM, DETECTION	
3	HB1-0400-000		1	ROLLER, BACK UP	
4	HA1-6221-000		1	SHAFT, BACK UP ROLLER	
5	HB1-0250-000	N	1	BRACKET	
6	HB1-0248-000		1	SPRING, LEAF	
7	HF5-0028-000		1	PAPER GUIDE UNIT	
8	HB1-0254-000	N	1	PLATE, SEPARATION GUIDE	
9	HS5-2012-000		2	SPRING, COIL	
10	HF5-0017-000		1	SEPARATION PAD UNIT	
11	HB1-0255-000		1	SPRING, LEAF GROUNDING	
12	HH2-2341-000		1	CABLE WITH RING TONGUE	
13	HA1-6102-000		1	BRUSH, STATIC CHARGE	

FIGURE 9 MAIN FRAME

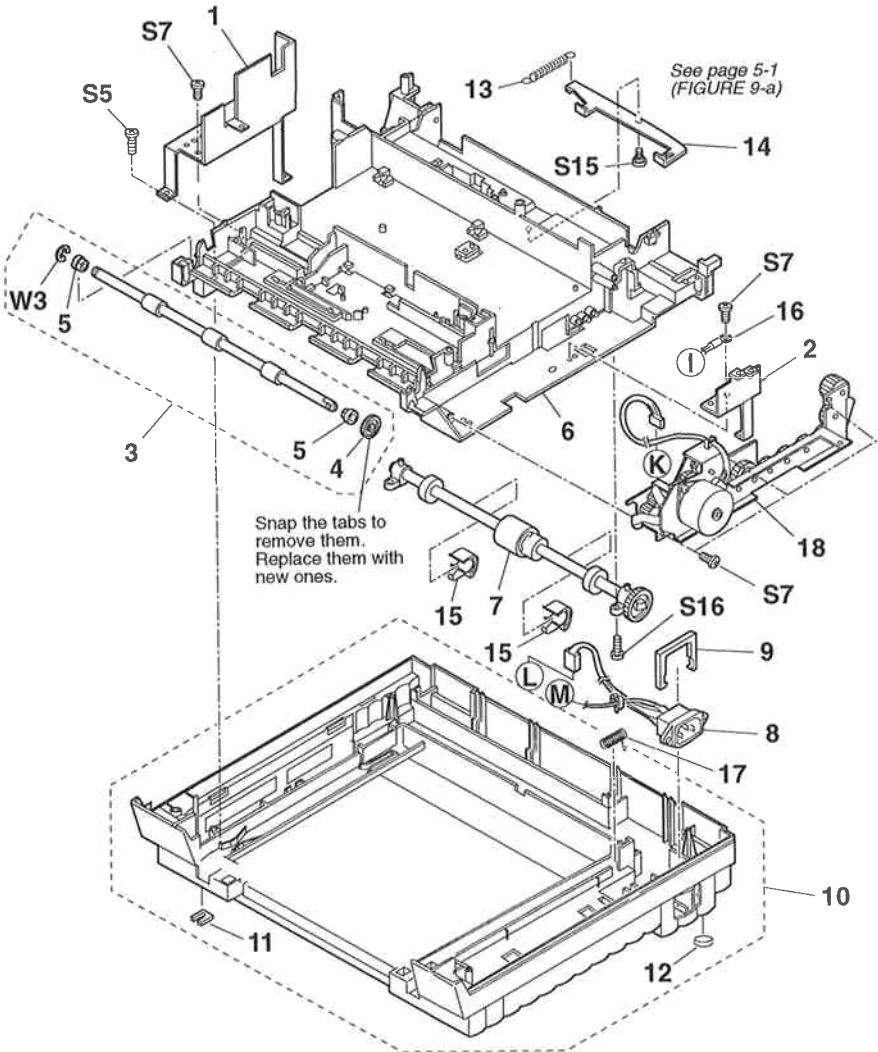


FIGURE & KEY No.	PART No.	R A N K	Q T Y	DESCRIPTION	REMARKS
9 - 1	HF5-0101-000	N	1	GROUNDING PLATE UNIT	
2	HB1-1129-000	N	1	PLATE, GROUNDING, RIGHT	
3	HG5-0057-000		1	EJECT ROLLER ASSY	
4	HS5-0024-000		1	GEAR, 21T	
5	HS1-1063-000		2	BUSHING	
6	HB1-1118-000	N	1	FRAME, MAIN	
7	HG5-0062-000		1	PICK-UP ROLLER ASS'Y	
8	HH2-2359-000		1	CABLE WITH INLET	
9	HB1-0216-000		1	PLATE, INLET STOP	
10	HF5-0095-000		1	LOWER COVER UNIT	
11	HB1-0317-000		1	FOOT, RUBBER	
12	XH9-0091-000		2	RUBBER PAD	
13	HS5-2030-000		1	SPRING, COIL	
14	HB1-0225-040		1	PLATE, PAPER RELEASE	
15	HB1-1003-000		2	GUIDE, PAPER PICKUP	
16	HH2-2414-000		1	CABLE WITH CONNECTOR	
17	HS5-2039-000		1	SPRING, CASSETTE PRESS	
18	NPN		1	DRIVE ASSY	

FIGURE 10 UPPER COVER

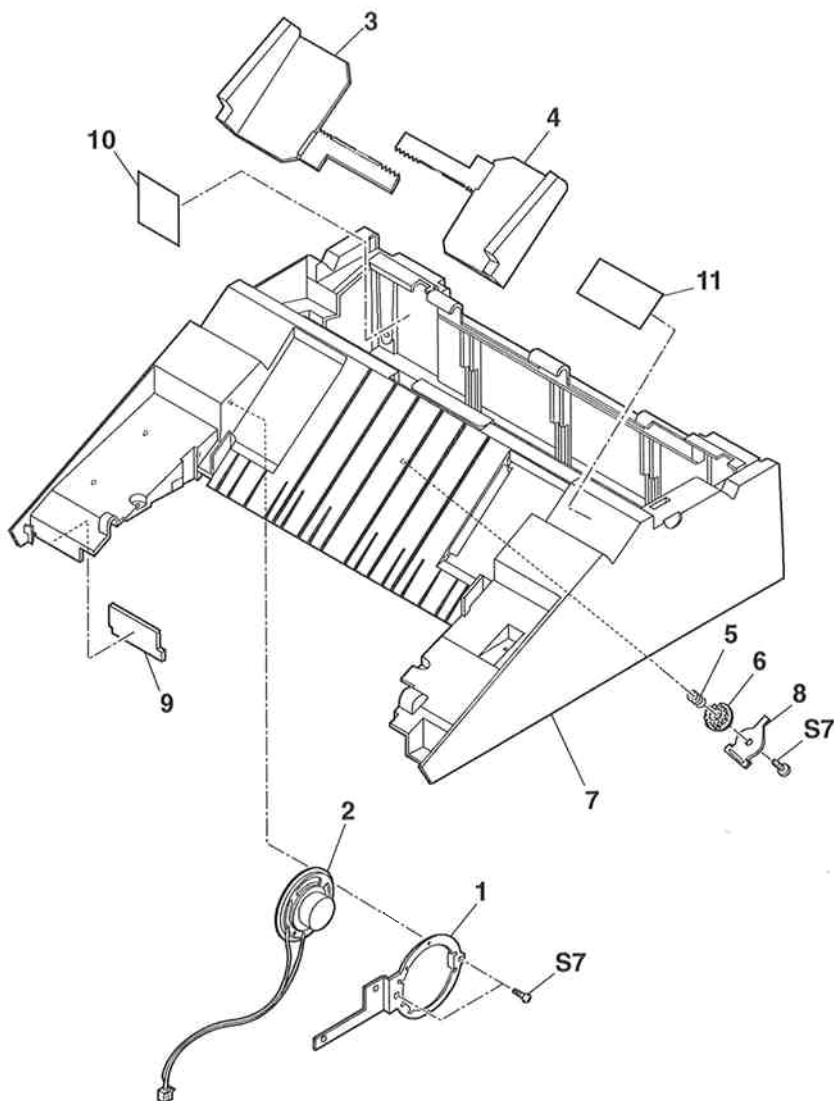


FIGURE & KEY No.	PART No.	R A N K	Q T Y	DESCRIPTION	REMARKS
10- 1	HB1-0311-000	N	1	PLATE, SPEAKER MOUNTING	
2	HH7-2038-000		1	SPEAKER	
3	HB1-0313-000		1	GUIDE, DOCUMENT, LEFT	
4	HB1-0314-000		1	GUIDE, DOCUMENT, RIGHT	
5	HS1-2143-000		1	SPRING STAINLESS	
6	HS1-0253-000		1	GEAR, 16T (POM)	
7	HB1-0310-080		1	COVER, UPPER	
8	HB1-1002-000		1	PLATE, PRESSURE	
9	HB1-1008-000		1	PAD, FOAM RUBBER	
10	HB1-1030-020		1	INK ABSORBAR	
11	HA2-2727-000		1	LABEL,RECORDING PAPER CAUTION	

FIGURE 11 OPERATION PANEL

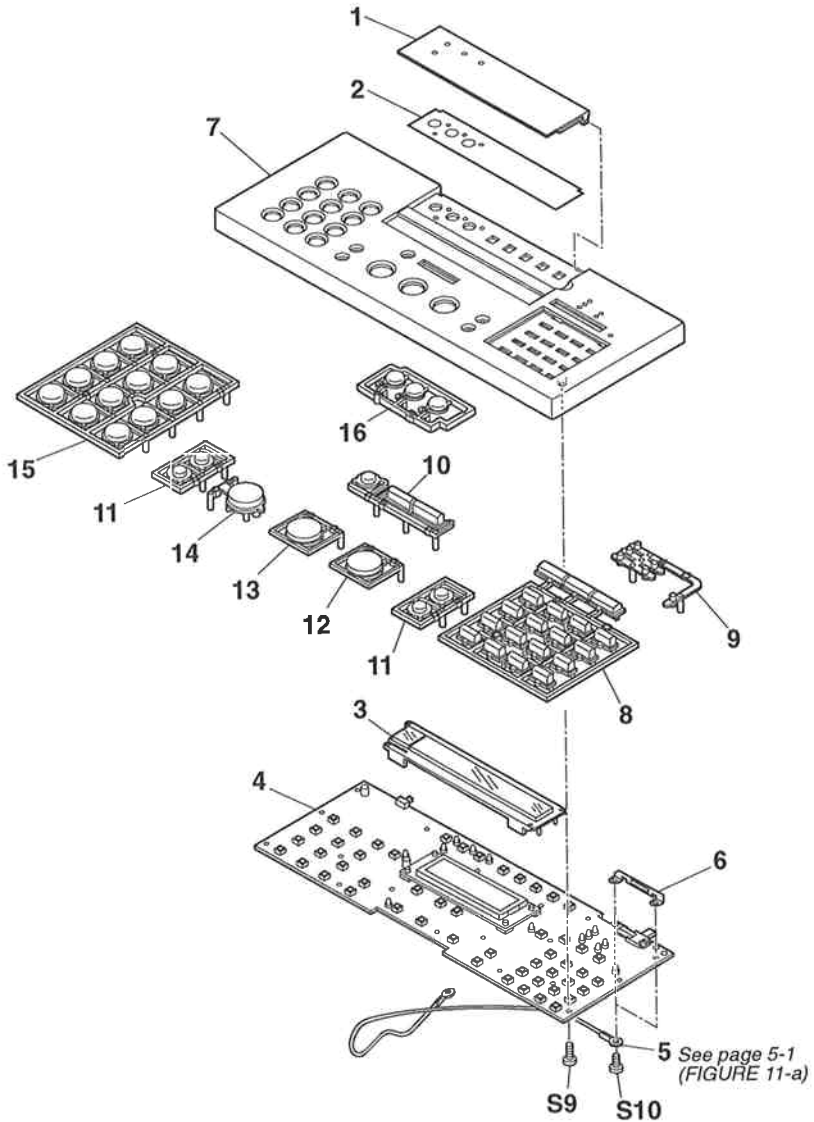


FIGURE & KEY No.	PART No.	R A N K	Q T Y	DESCRIPTION	REMARKS
11- 1	HB1-1188-000		1	COVER, BUTTON	
2	HB1-1350-030		1	SHEET, OPRATION	
3	HB1-1126-000		1	COVER, DISPLAY	
4	HG1-4247-000		1	OPCNT BOARD ASSY	
5	HH2-2345-000		1	CABLE WITH RING TONGUE	
6	HB1-0290-000		1	PLATE, GROUNDING	
7	HB1-1183-000		1	COVER, PANEL	
8	HB1-0272-000		1	KEY TOP, "ONE TOUCH DIAL"	
9	HB1-0277-000		1	COVER, LED	
10	HB1-0273-000		1	KEY TOP, "SEARCH"	
11	HB1-0274-000		2	KEY TOP, "FUNCTION"	
12	HB1-0269-000		1	KEY TOP, "START"	
13	HB1-0282-000		1	KEY TOP, "STOP"	
14	HB1-0346-000		1	KEY TOP, "ON HOOK"	
15	HB1-0271-000		1	KEY TOP, "DIAL"	
16	HB1-0275-000		1	KEY TOP, "PRINTER"	

FIGURE 12 ADF UPPER

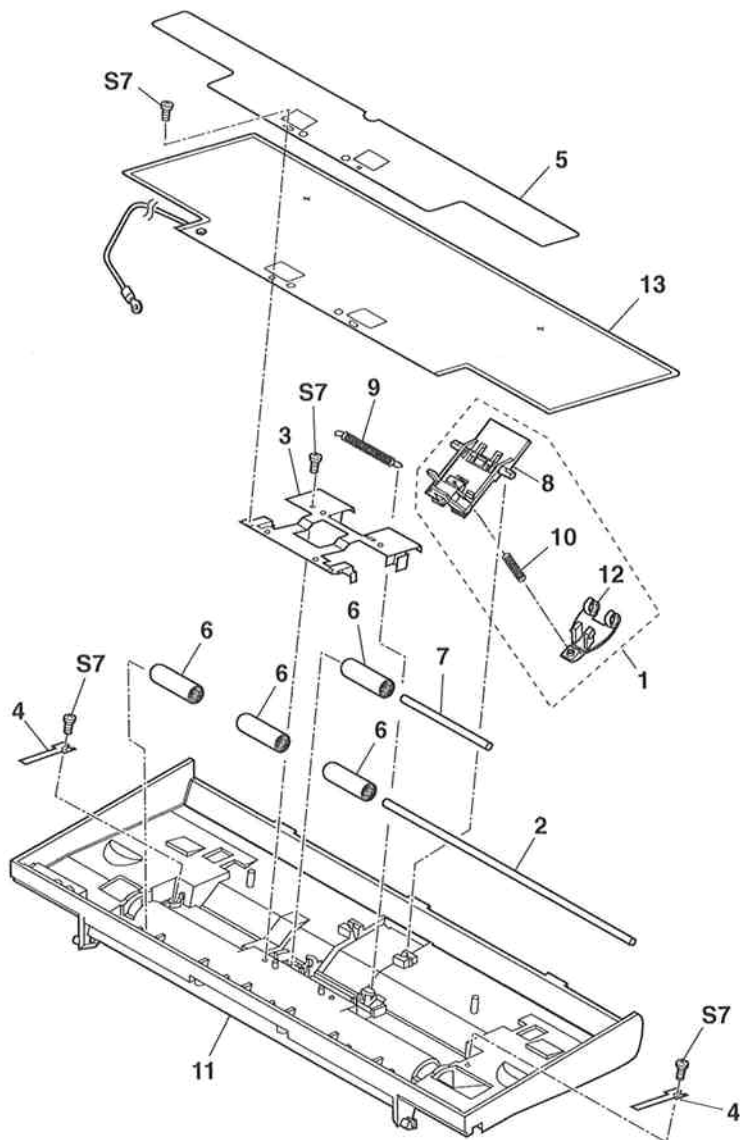


FIGURE & KEY No.	PART No.	RANK	QTY	DESCRIPTION	REMARKS
12- 1	HG5-0454-000		1	SEPARATION GUIDE ASS'Y	
2	HA1-6280-000		1	SHAFT, BACK UP ROLLER	
3	HB1-0260-000		1	PLATE, PRESSURE	
4	HB1-0261-020		2	PLATE, PRESSURE	
5	HB1-1651-000		1	SHEET, OPCNT INSULATOR	
6	HB1-0400-000		4	ROLLER, BACK UP	
7	HA1-3066-000		1	SHAFT, BACK UP ROLLER	
8	HF5-0098-000		1	SEPARATION GUIDE UNIT	
9	HS5-2013-030		1	SPRING, COIL	
10	HS5-2036-000		1	SPRING, COIL	
11	HB1-0259-020		1	COVER, DOCUMENT GUIDE, UPPER	
12	HB1-1121-000		1	ARM, SEPARATION GUIDE	
13	HB1-0263-000		1	SHEET WITH CABLE, GROUNDING	

FIGURE 13 SEPARATION ROLLER & FEED ROLLER

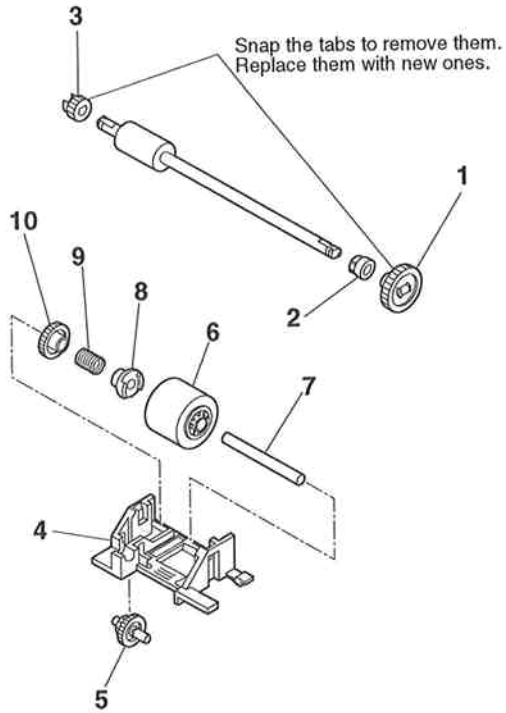


FIGURE & KEY No.	PART No.	R A N K	Q T Y	DESCRIPTION	REMARKS
13- 1	HS1-0283-000		1	GEAR, 28T	
2	HS1-1063-000		1	BUSHING	
3	HS5-0023-000		1	GEAR, 21T	
4	HB1-0237-000		1	HOLDER, SEPARATION ROLLER	
5	HS5-0039-000		1	GEAR, STEPPED	
6	HB1-0235-000		1	ROLLER, SEPARATION	
7	HB1-0236-020		1	SHAFT, SEPARATION ROLLER	
8	HB1-0238-000		1	SPACER	
9	HS5-2027-000		1	SPRING, CLUCH	
10	HS5-0040-000		1	GEAR, 35T	

FIGURE 14 PICKUP ROLLER

See page 5-2 (Figure 14-a)

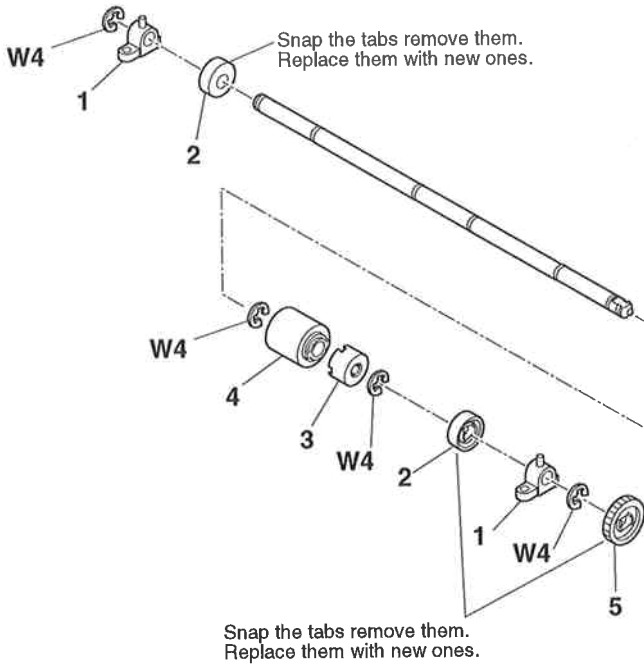


FIGURE & KEY No.	PART No.	RANK	QTY	DESCRIPTION	REMARKS
14- 1	HS5-1007-000		2	BUSHING	
2	HB1-0258-000		2	ROLLER, SPACER	
3	HB1-0251-000		1	CLUTCH	
4	HB1-0256-000		1	ROLLER, PICKUP	
5	HS5-0033-000		1	GEAR, 31T	

FIGURE 15 DRIVE GEARS

See page 5-2 (Figure 15-a)

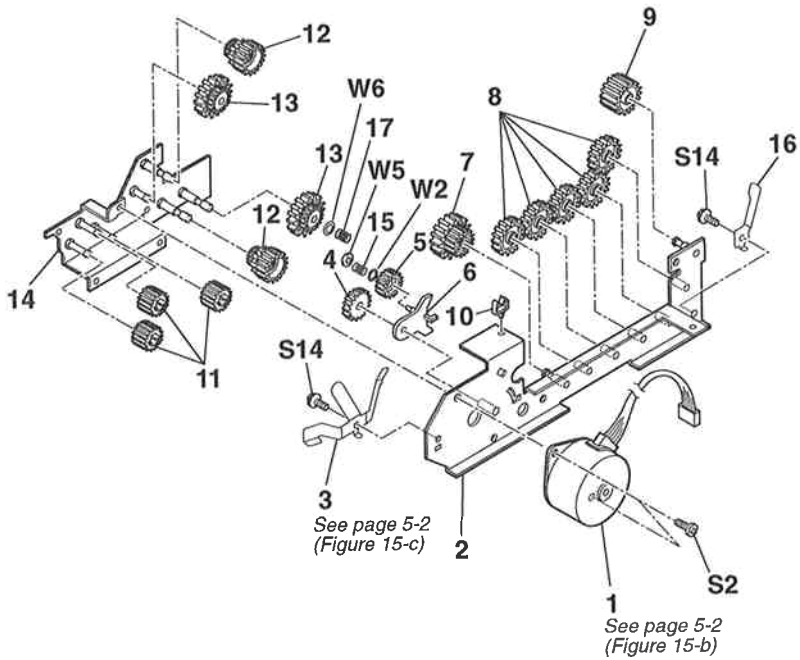


FIGURE & KEY No.	PART No.	RANK	QTY	DESCRIPTION	REMARKS
15- 1	HH7-2037-000		1	PULSE MOTOR, READER	
2	HF5-0013-020	N	1	PLATE, GEAR SHAFT, RIGHT	
3	HB1-0247-000		1	PLATE, GROUNDING	
4	HS5-0027-000		1	GEAR, 36T	
5	HS5-0028-000		1	GEAR, 24T	
6	HB1-0246-000		1	ARM, TRANSMISSION	
7	HS5-0032-000		1	GEAR, STEPPED	
8	HS5-0030-000		5	GEAR, 26T	
9	HS5-0031-000		1	GEAR, 23T	
10	WT2-0434-000		1	CLIP	
11	HS5-0029-000		3	GEAR, 16T	
12	HS5-0026-000		2	GEAR, STEPPED	
13	HS5-0025-000		2	GEAR, STEPPED	
14	HF5-0012-000	N	1	PLATE, GEAR SHAFT, LEFT	
15	HS5-2011-000		1	SPRING, COIL	
16	HB1-0292-000		1	PLATE, GROUNDING	
17	HS5-2035-000		1	SPRING, COIL	

FIGURE 16 PRINTER (1)

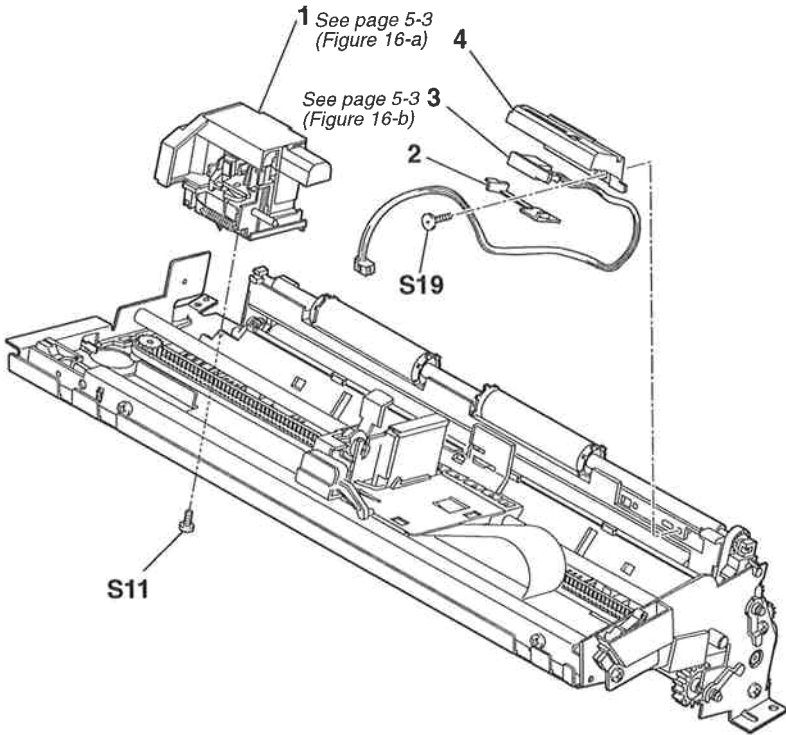


FIGURE & KEY No.	PART No.	R A N K	Q T Y	DESCRIPTION	REMARKS
16- 1	HG5-0072-000		1	PURGE UNIT	
2	HB1-0300-030		1	COVER, FOOTER SENSOR	
3	HG1-4108-000		1	SENSOR BOARD ASS'Y	
4	HB1-0245-000		1	HOLDER, FOOTER SENSOR	

FIGURE 17 PRINTER (2)

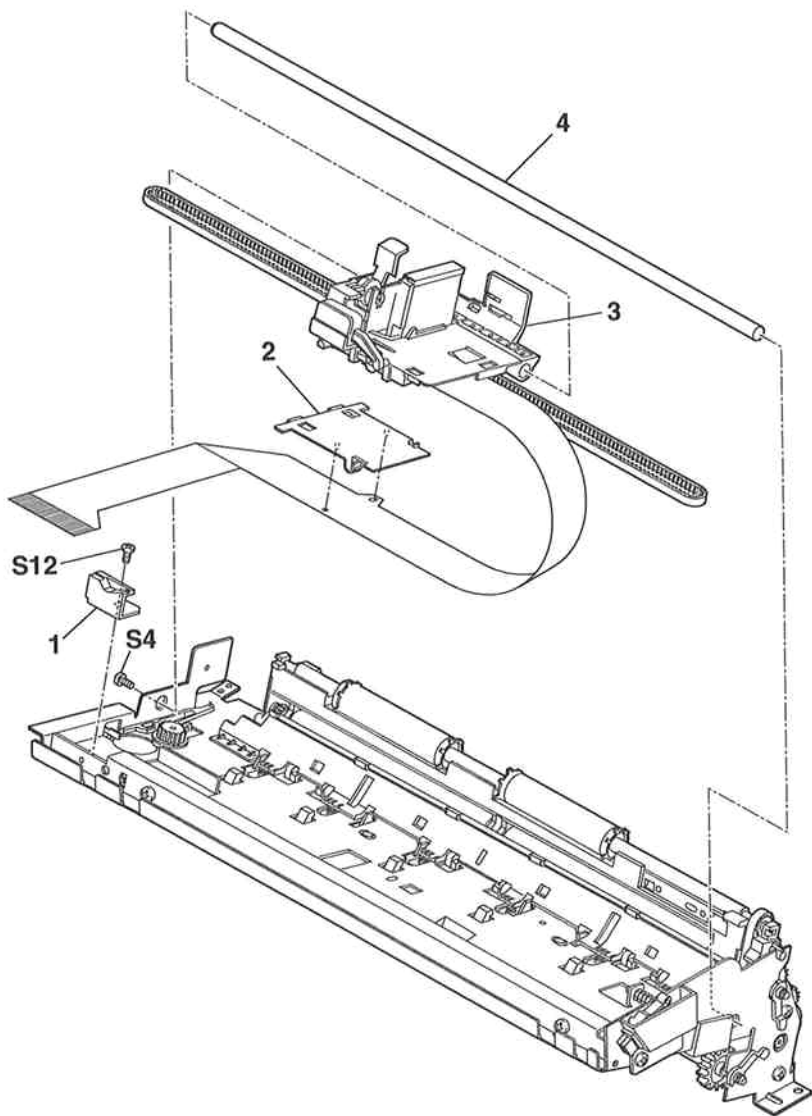


FIGURE & KEY No.	PART No.	RANK	QTY	DESCRIPTION	REMARKS
17- 1	HB1-0286-020		1	GUIDE, CORNER	
2	HB1-0105-000		1	HOLDER, CARRIAGE RIBBON CABLE	
3	HG5-0153-000		1	CARRIAGE UNIT	
4	HB1-0284-000	N	1	SHAFT, CARRIAGE	

FIGURE 18 CARRIAGE (1)

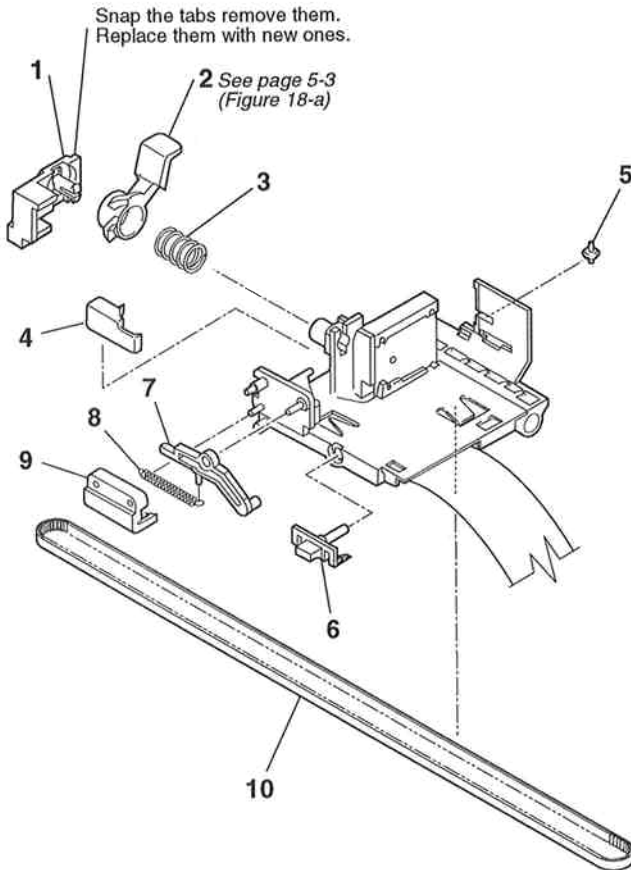


FIGURE & KEY No.	PART No.	RANK	QTY	DESCRIPTION	REMARKS
18- 1	QB1-0440-000		1	COVER, HOOK	
2	QB1-0437-000		1	LEVER, HOOKING	
3	QB1-0439-000		1	SPRING, COIL	
4	QB1-0438-000		1	HOOK, CARRIAGE	
5	QB1-0443-000		1	WHEEL, CARRIAGE	
6	HB1-0116-000		1	PIN, CARRIAGE	
7	HB1-0117-000		1	ARM, CARRIAGE	
8	HS5-2015-000		1	SPRING, HOOK AND COIL	
9	HB1-0115-000		1	COVER, CARRIAGE TOP	
10	QB1-0434-000		1	BELT, CARRIAGE	

FIGURE 19 CARRIAGE (2)

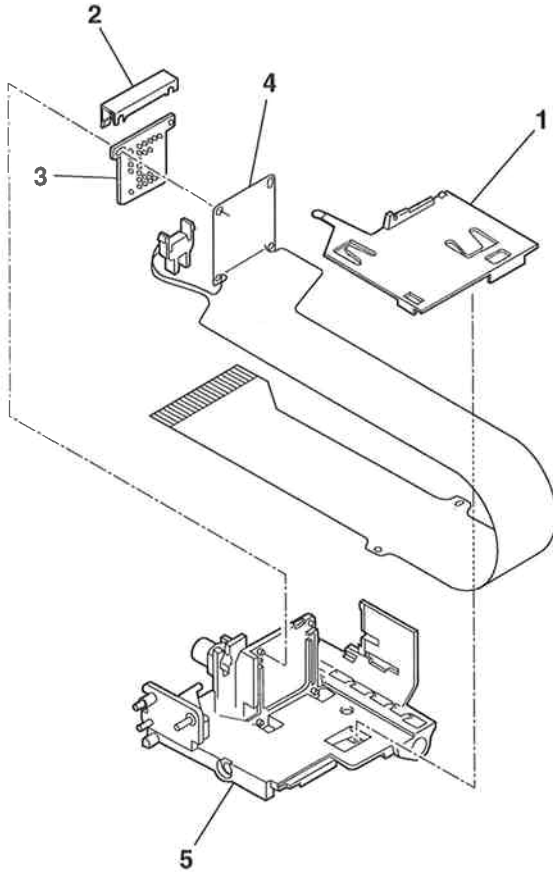


FIGURE & KEY No.	PART No.	R A N K	Q T Y	DESCRIPTION	REMARKS
19- 1	HB1-0114-000		1	GUIDE, RIBBON CABLE	
2	QB1-0441-000		1	HOLDER, RIBBON CABLE (UPPER)	
3	QB1-0436-000		1	PAD, CONTACT	
4	HG1-4095-000		1	CARRIAGE RIBBON CABLE ASS'Y	
5	HB1-0113-000		1	BASE, CARRIAGE	

FIGURE 20 PAPER FEED SECTION (1)

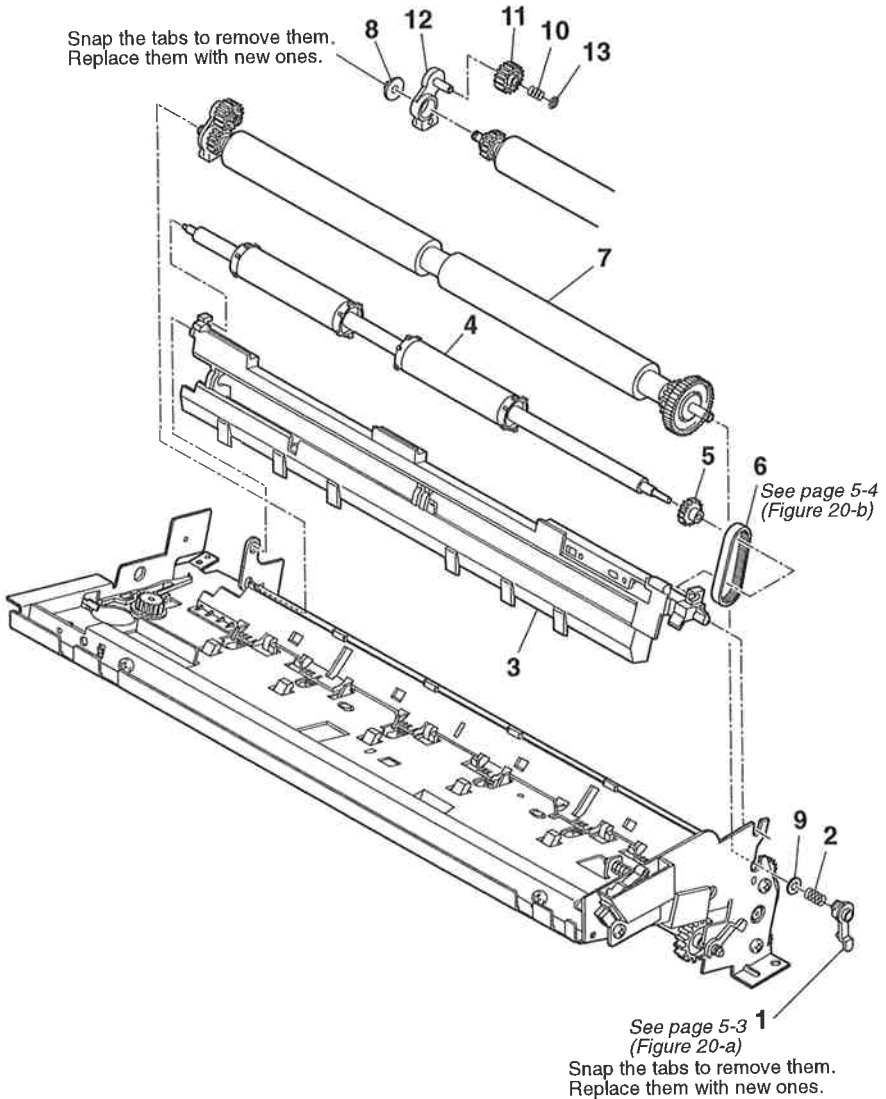


FIGURE & KEY No.	PART No.	R A N K	Q T Y	DESCRIPTION	REMARKS
20 - 1	QB1-0417-000		1	BUSHING	
2	QB1-0423-000		1	SPRING, COIL	
3	HB1-0301-000		1	PLATEN	
4	HB1-0299-000		1	ROLLER, PAPER EJECT	
5	HS5-3004-000		1	PULLY	
6	XF9-0485-000		1	BELT, TRANSMISSION	
7	HG5-0075-000		1	PAPER FEED ROLLER ASS'Y	
8	QB1-0422-000		1	BUSHING	
9	QB1-0622-000		1	WASHER, PLAIN	
10	QB1-0421-000		1	SPRING, COIL	
11	QB1-0425-000		1	GEAR, TRANSMISSION	
12	QB1-0420-000		1	ARM, TRANSMISSION	
13	XA9-0613-000		1	NUT, SUS	

FIGURE 21 PAPER FEED SECTION (2)

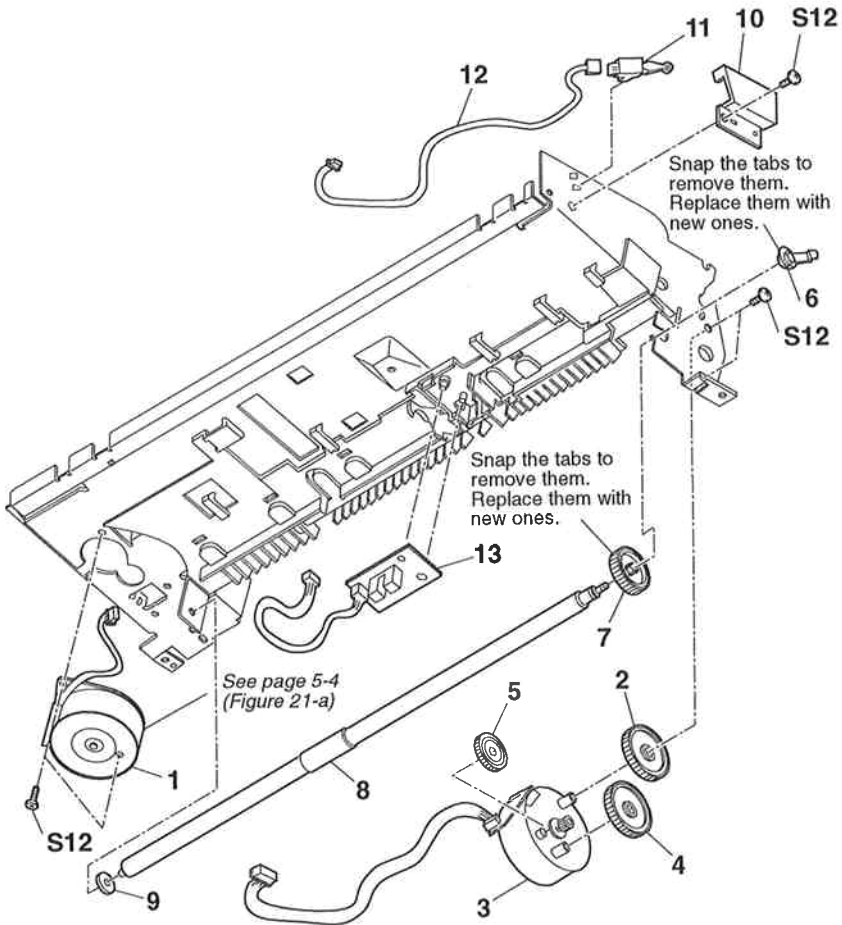


FIGURE & KEY No.	PART No.	R A N K	Q T Y	DESCRIPTION	REMARKS
21- 1	QH4-4038-000		1	MOTOR, CARRIAGE	
2	QB1-0500-000		1	GEAR, SLOW DOWN	
3	HH7-2036-000		1	MOTOR, PAPER FEED	
4	HS5-0034-000		1	GEAR, STEPPED	
5	HS5-0036-000		1	GEAR, IDLER	
6	QB1-0417-000		1	BUSHING	
7	HS5-0035-000		1	GEAR, 24T	
8	HB1-0287-000		1	ROLLER, PAPER FEED	
9	QB1-0422-000		1	BUSHING	
10	HB1-0372-000		1	COVER, SENSOR	
11	WC4-5052-000		1	MICRO SWITCH	
12	HH2-2358-000		1	CABLE WITH CONNECTOR, 2P	
13	HG1-4088-000		1	SENSOR BOARD ASSY	

FIGURE 22 CARRIAGE GUIDE & PRESSUER PLATE

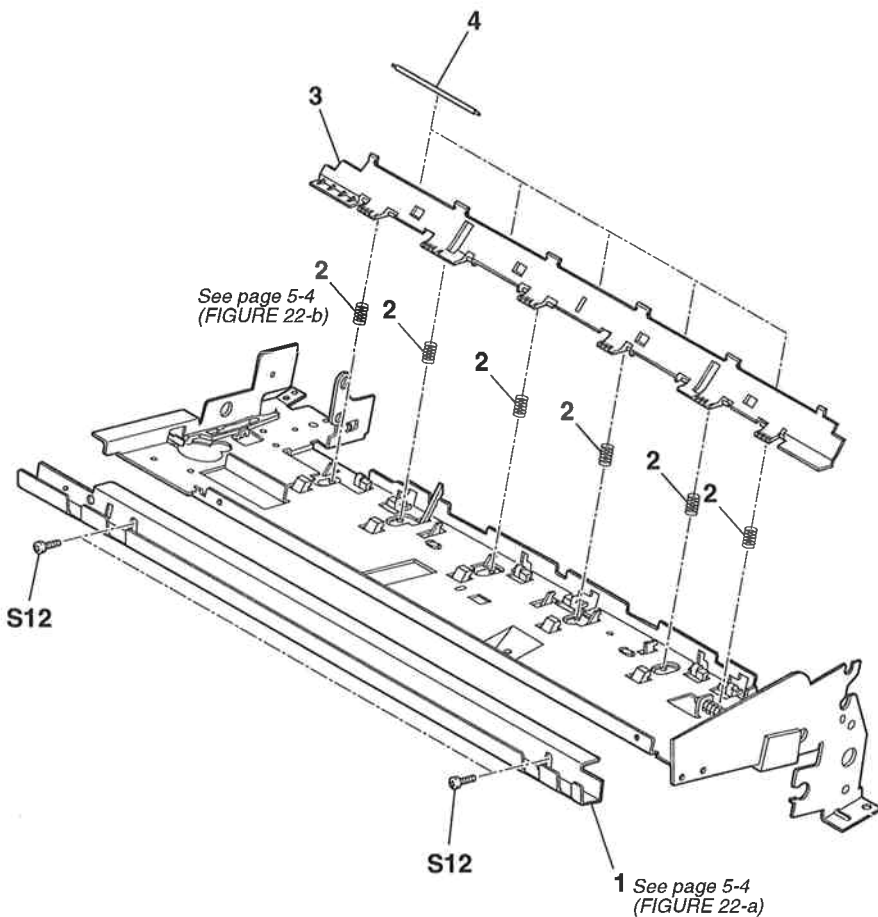


FIGURE & KEY No.	PART No.	R A N K	Q T Y	DESCRIPTION	REMARKS
22 - 1	HB1-0288-000	N	1	FRAM, CARRIAGE GUIDE	
2	HS5-2035-000		6	SPRING, COIL	
3	HB1-0289-000		1	PLATE, PRESSURE	
4	QB1-0684-000		5	ROLLER, PRESSURE	

FIGURE 23 PRINTER FRAME

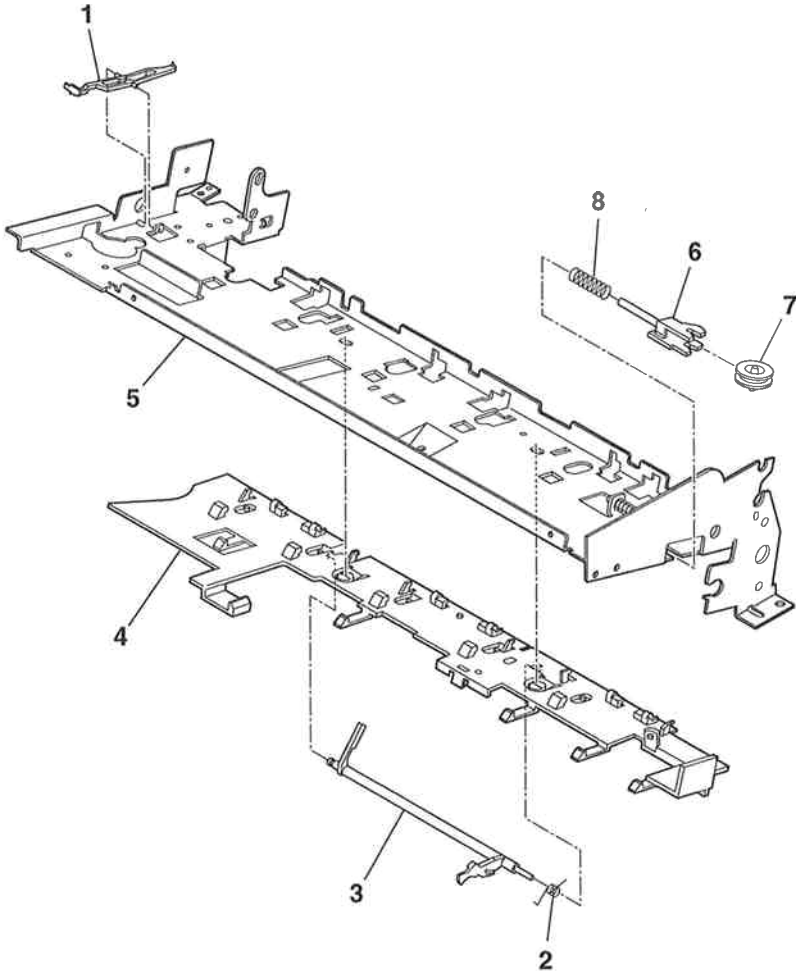


FIGURE & KEY No.	PART No.	R A N K	Q T Y	DESCRIPTION	REMARKS
23 - 1	QB1-0413-000		1	ARM, SENSOR	
2	QB1-0412-000		1	SPRING, TORSION	
3	QB1-0411-000		1	ARM, PAPER SENSOR	
4	HB1-0302-000		1	GUIDE, PRESSURE PLATE	
5	HB1-0285-000	N	1	FRAME, PRINTER	
6	QB1-0501-020		1	ROLLER, IDLER	
7	QB1-0502-000		1	BRACKET, IDLER	
8	QB1-0503-000		1	SPRING, COIL	

FIGURE 24 RECORDING PAPER CASSETTE

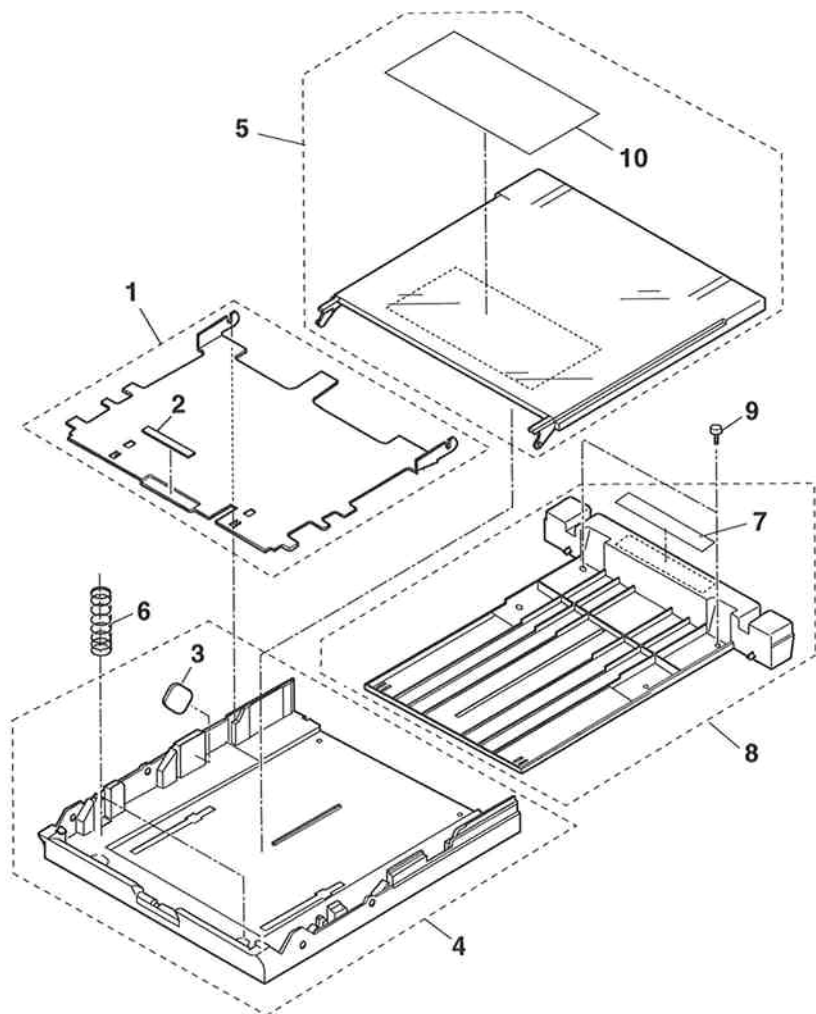


FIGURE & KEY No.	PART No.	R A N K	Q T Y	DESCRIPTION	REMARKS
24 - 1	HF5-0097-000	N	1	PAPER LIFTING PLATE UNIT	
2	HB1-0306-000		1	SHEET, FRICTION	
3	HB1-1133-000		1	VELCRO PAD	
4	HF5-0100-000		1	FRAME,CASSETTE	
5	HF5-0135-000		1	CASSETTE COVER UNIT	
6	HS5-2038-000		2	SPRING, PAPER LIFTING	
7	HB1-1404-000		1	LABEL, CASSETTE PULL OUT	
8	HF5-0134-000		1	CASSETTE EXTENSION	
9	XA9-0587-000		2	SCREW, M3X8	
10	HA2-2730-000		1	LABEL, RECORDING PAPER SET	

FIGURE 25 FUSE, POWER SUPPLY

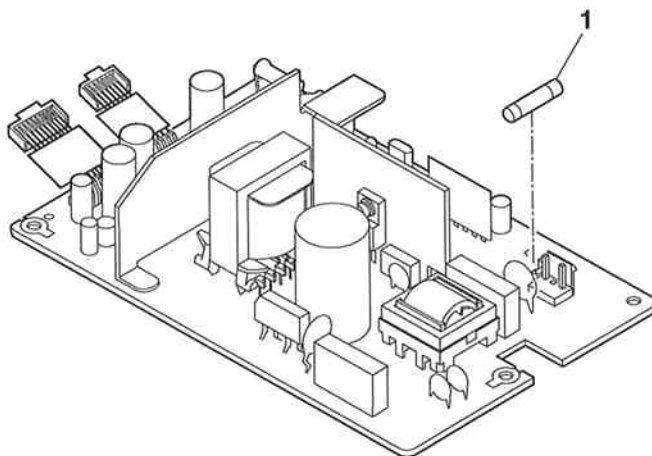


FIGURE & KEY No.	PART No.	R A N K	Q T Y	DESCRIPTION	REMARKS
25 - 1	HY7-2608-000		1	FUSE, 3.15A 125V	

FIGURE 26 SCNT BOARD ASS'Y

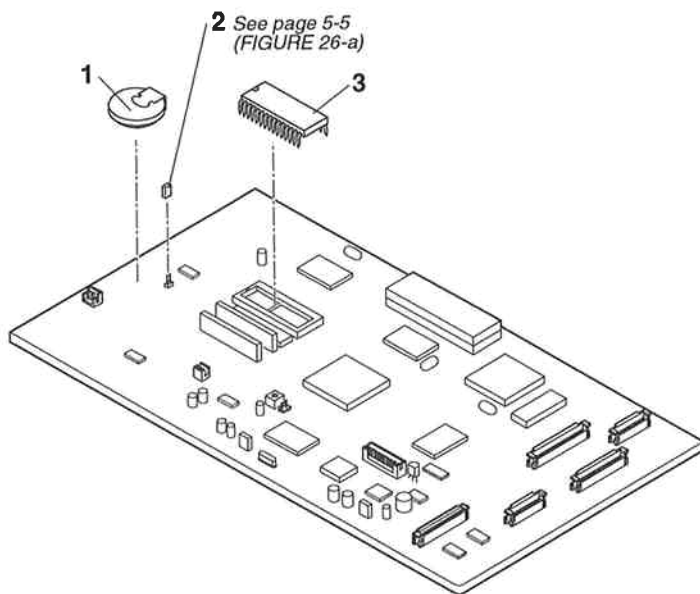


FIGURE & KEY No.	PART No.	RANK	QTY	DESCRIPTION	REMARKS
26 - 1	WK1-5047-000		1	LITHIUM BATTERY, CR2450HC22NC	
2	WS1-0172-000		1	PLUG, SHORT	
3	HH4-2565-000		1	IC, M27C4001-12F1, EPROM	

FIGURE 27 HANDSET

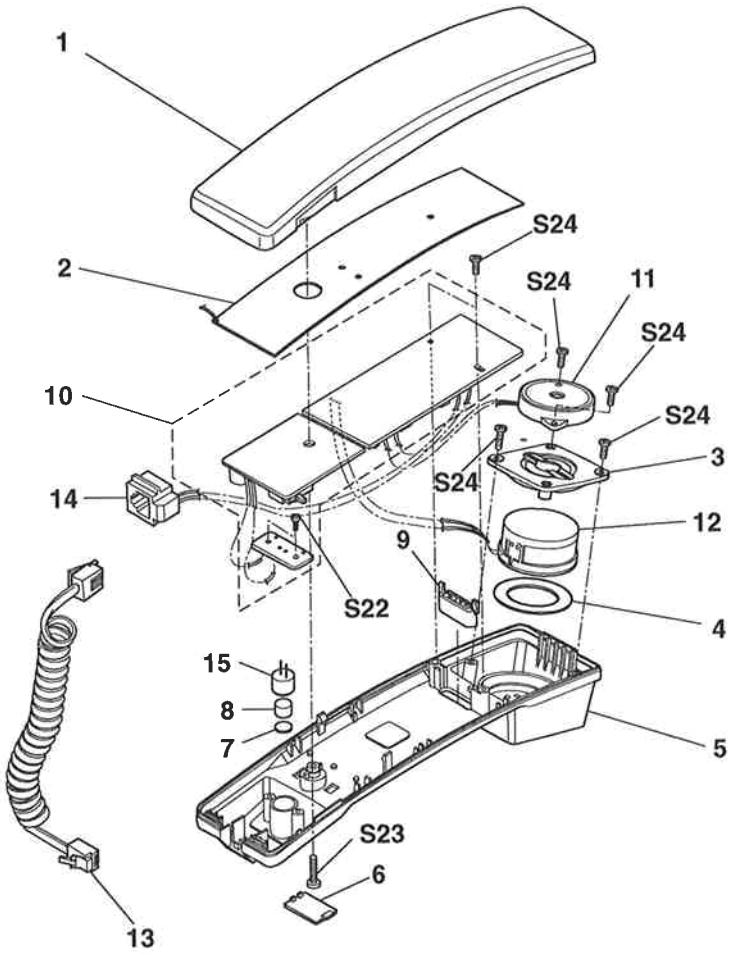


FIGURE & KEY No.	PART No.	RANK	QTY	DESCRIPTION	REMARKS
27 - 1	HA1-6141-000		1	COVER, UPPER (AG)	
2	HA1-5412-000		1	PLATE, NOISE SHIELD (CT-15)	
3	HA1-4279-000		1	HOLDER, SPEAKER	
4	HA1-3185-000		1	SEAL, RUBBER	
5	HA1-6142-000		1	COVER, LOWER (AG)	
6	HA1-6143-000		1	COVER, SCREW (AG)	
7	HA1-3002-000		1	FILTER B, MECHANICAL	
8	HA1-3001-000		1	FILTER, MECHANICAL	
9	HA1-6144-000		1	KEY TOP F (AG)	
10	HG1-2196-000		1	TELCNT BOARD ASS'Y	
11	HH7-1299-000		1	RINGER PKM34EW-12	
12	WR1-0111-000		1	SPEAKER DH-70C	
13	HH2-1703-000		1	CORD, COILED (AG)	
14	HH2-1277-000		1	MODULAR JACK	
15	WR1-0086-000		1	MICROPHONE	

FIGURE 28 FXB-CASSETTE 3 A4/200
PACKAGE CONTENTS

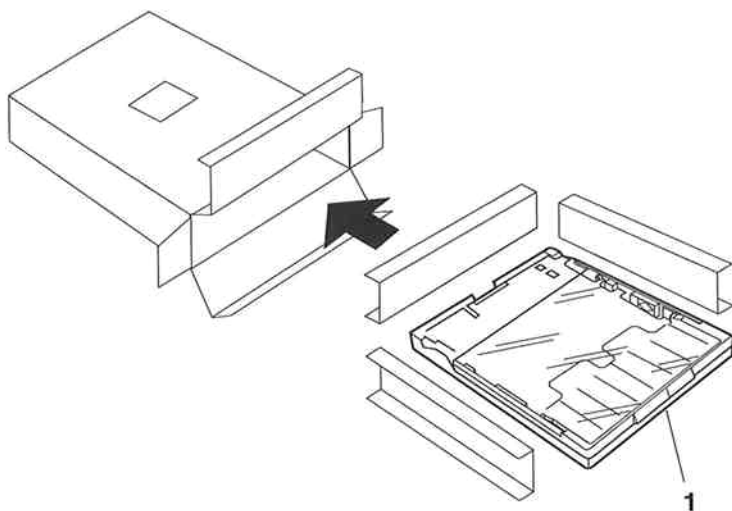


FIGURE & KEY No.	PART No.	R A N K	Q T Y	DESCRIPTION	REMARKS
28 - 1	NPN		1	RECORDING PAPER CASSETTE (A4)	

FIGURE 29 FXB-CASSETTE 3 A4/200
RECORDING PAPER CASSETTE

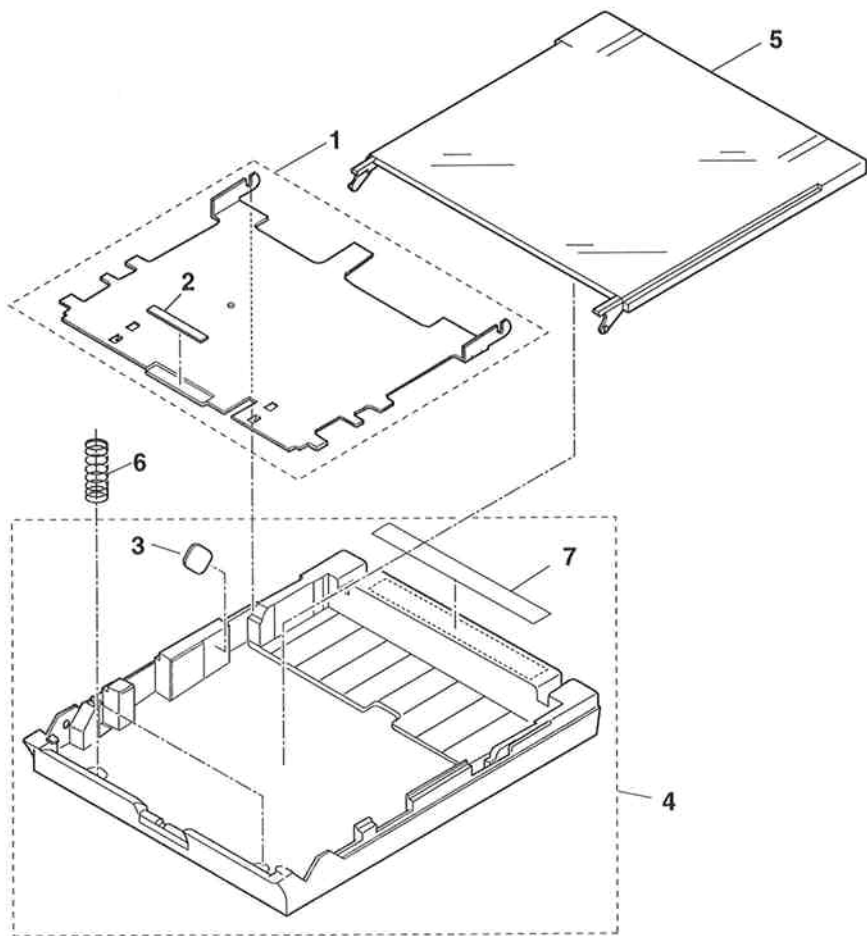


FIGURE & KEY No.	PART No.	R A N K	Q T Y	DESCRIPTION	REMARKS
29 - 1	HF5-0097-000	N	1	PAPER LIFTING PLATE UNIT	
2	HB1-0306-000		1	SHEET, FRICTION	
3	HB1-1133-000		1	VELCRO PAD	
4	HF5-0099-000		1	CASSETTE FRAME UNIT	
5	HB1-1125-000		1	COVER, CASSETTE	
6	HS5-2038-000		2	SPRING, PAPER LIFTING	
7	HB1-1405-000		1	LABEL, CASSETTE PULL OUT	

3. SCREWS & WASHERS LIST

FAX-B360IF SCREWS

FIGURE & KEY No.	PART No.	RANK	QTY	DESCRIPTION	REMARKS
S- 1	XB4-7300-807		15	SCREW, TAP TIGHT, BINDING HEAD	
2	XB1-2300-607		2	SCREW, BH3X6(S)	
3	XA9-0759-000		2	SCREW, PH3X10	
4	XB5-6300-605		1	SCREW, TP, PH3X6	
5	XB4-7301-007		6	SCREW, TAP TIGHT BHM3X10	
6	XA1-7260-407		2	SCREW, PH2.6X4	
7	XB4-7300-809		20	SCREW, TAP, BINDING HEAD, M3X8	
8	XB2-6400-607		1	SCREW, W/WASHER, M4X6(S)	
9	XB4-7200-805		18	SCREW, M2X8	
10	XB1-2300-605		2	SCREW, MACHINE M3X6	
11	XB4-7300-609		1	SCREW, TAP, BINDING HEAD, M3X6	
12	XB1-2300-407		10	SCREW, M3X4	
13	XA9-0258-000		12	SCREW, BINDING HEAD MACHINE	
14	XA9-0806-000		5	SCREW, BINDING HEAD MACHINE	
15	XA9-0735-000		1	SCREW, STEPPED, M3X10	
16	XB4-7301-207		2	SCREW, BH M3X12, S	
17	XA9-0686-000		2	SCREW, M3x6	
18	XA9-0289-000		2	SCREW M3 L7.2	
19	XA9-0318-000		1	SCREW, TAP, PH2.6X8	
20	XA9-0476-000		1	SCREW, TP M3X8	
21	HS5-9004-000		1	SCREW, STEPPED, M3	
22	XB4-7200-609		2	SCREW, M2X6	
23	XB1-2301-406		1	SCREW, BH 3X14	
24	XB4-7260-809		6	SCREW, FT, BH 2.6X8	

FAX-B360IF WASHERS

FIGURE & KEY No.	PART No.	R A N K	Q T Y	DESCRIPTION	REMARKS
W - 1	HA9-0033-000		1	RETAINING RING (E-TYPE)	
2	XD1-1104-118		1	WASHER	
3	XD2-1100-402		1	RETAINING RING (E-TYPE)	
4	XD2-1100-642		4	RETAINING RING (E-TYPE)	
5	XD2-2300-202		1	GRIP RING	
6	XD1-1104-139		1	WASHER (S)	

4. TOOL

FIGURE 30 TOOL

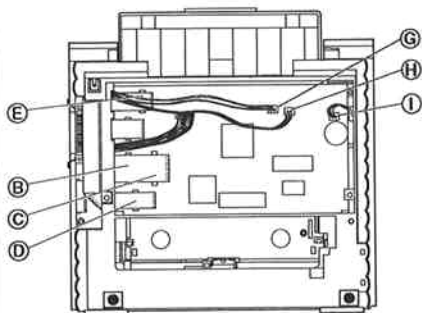


FIGURE & KEY No.	PART No.	R A N K	Q T Y	DESCRIPTION	REMARKS
30 - T 1	TKC-0953-000		1	GREASE FLOIL G311S (20GS)	

5. GUIDE TO REPLACEMENT

FIGURE 3-a

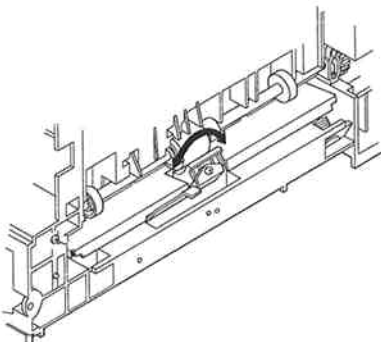
See Page
2 - 5



Arrange the SCNT board wiring as shown in the diagram.

FIGURE 8-a

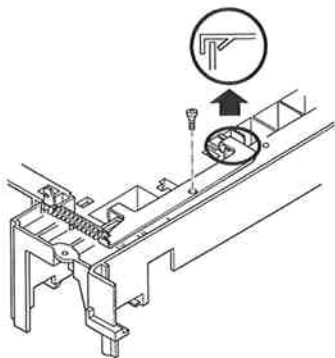
See Page
2 - 15



Having attached the recording paper separation pad, check whether it moves left and right, as indicated by the arrows.

FIGURE 9-a

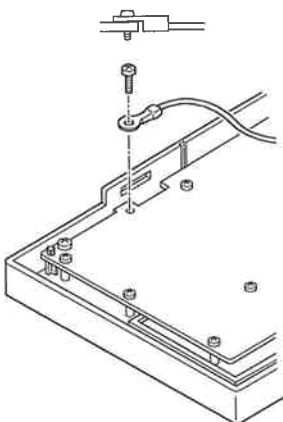
See Page
2 - 17



Attach the recording paper release lever as shown in the diagram.

FIGURE 11-a

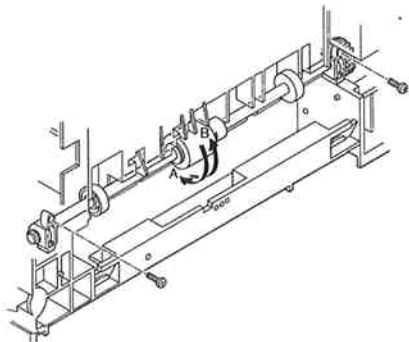
See Page
2 - 21



When attaching the ground wire to the OPCNT board, ensure that the ring at the end of the wire faces as shown in the diagram.

FIGURE 14-a

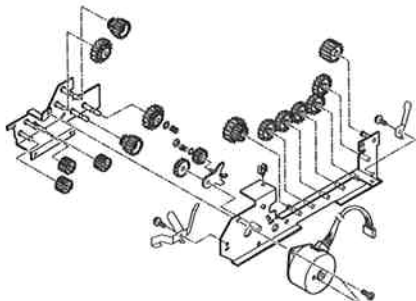
See Page
2 - 27



When attaching the pickup roller, rotate it by hand and check that it turns in direction A, and not in direction B.

FIGURE 15-a

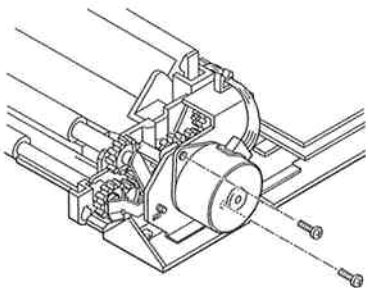
See Page
2 - 29



The plastic tabs which secure the gears, one removed, should be replaced with new ones.

FIGURE 15-b

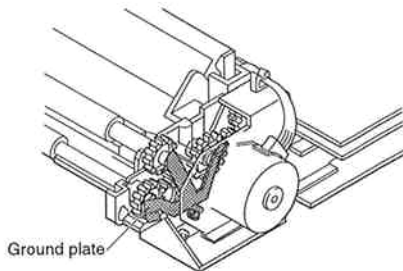
See Page
2 - 29



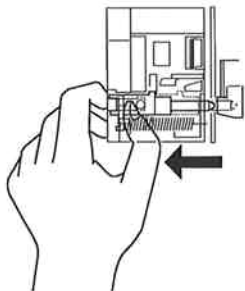
Be careful not to attach the document reading motor in reverse.

FIGURE 15-c

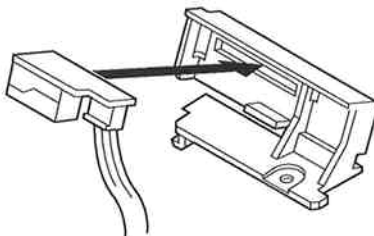
See Page
2 - 29



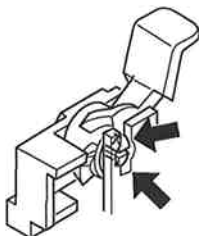
When attaching the ground plate, ensure that it properly contacts each of the three rollers, and take care that it does not get bent out of shape.

FIGURE 16-aSee Page
2 - 31

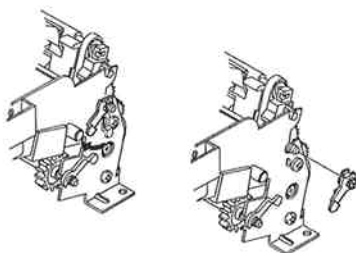
Remove the purge unit while sliding the pin to the left, as shown in the diagram.

FIGURE 16-bSee Page
2 - 31

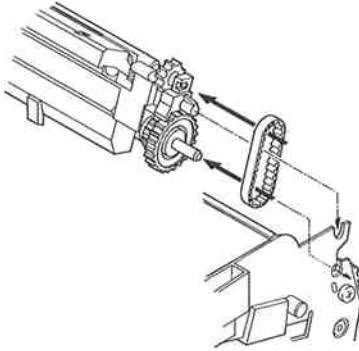
When attaching the ink detector sensor board, make sure that fits correctly into the hole in the holder.

FIGURE 18-aSee Page
2 - 35

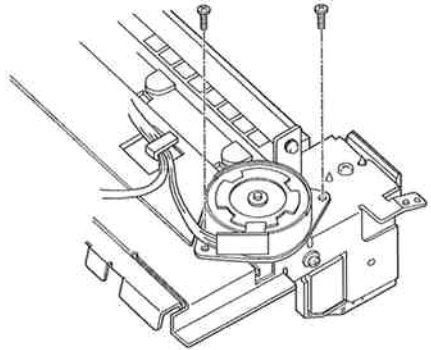
Remove while pressing in the direction of the arrows.

FIGURE 20-aSee Page
2 - 39

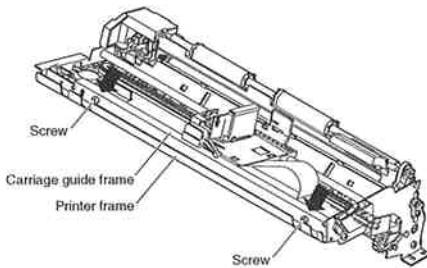
To remove the bushing, snap it off by forcing it in the direction indicated by the arrow.

FIGURE 20-bSee Page
2 - 39

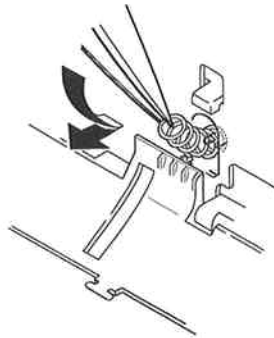
When attaching the platen, be sure not to forget the transmission belt illustrated in the diagram.

FIGURE 21-aSee Page
2 - 41

Be careful not to attach the carriage motor in reverse.

FIGURE 22-aSee Page
2 - 43

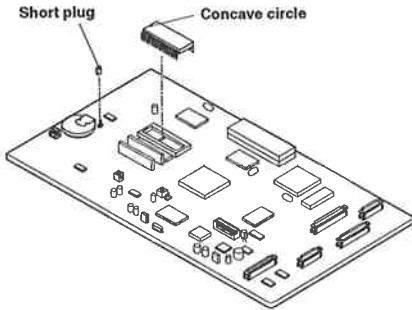
When attaching the carriage guide frame, press the printer frame down (in the direction of the arrows) and tighten the screws.

FIGURE 22-bSee Page
2 - 43

Attach the spring with precision pliers, in the direction of the arrow.

FIGURE 26-a

See Page
2 - 51



The replacement SCNT board does not come with the short plug shown in the diagram. When replacing the SCNT board, the plug should be taken from the old one and used on the new one. When replacing the ROM, please make sure it is facing the right way. The concave circle on the surface of the ROM should face as shown in the illustration.

This page intentionally left blank

6. NUMERICAL INDEX

PART NUMBER	FIGURE & KEY No.	DESCRIPTION	PART NUMBER	FIGURE & KEY No.	DESCRIPTION
HA1-3001-000	27 - 8	FILTER, MECHANICAL	HB1-0269-000	11 - 12	KEY TOP, "START"
HA1-3002-000	27 - 7	FILTER B, MECHANICAL	HB1-0271-000	11 - 15	KEY TOP, "DIAL"
HA1-3066-000	12 - 7	SHAFT, BACK UP ROLLER	HB1-0272-000	11 - 8	KEY TOP, "ONE TOUCH DIAL"
HA1-3185-000	27 - 4	SEAL, RUBBER	HB1-0273-000	11 - 10	KEY TOP, "SEARCH"
HA1-4279-000	27 - 3	HOLDER, SPEAKER	HB1-0274-000	11 - 11	KEY TOP, "FUNCTION"
HA1-5412-000	27 - 2	PLATE, NOISE SHIELD (CT-15)	HB1-0275-000	11 - 16	KEY TOP, "PRINTER"
HA1-6102-000	8 - 13	BRUSH, STATIC CHARGE	HB1-0277-000	11 - 9	COVER, LED
HA1-6141-000	27 - 1	COVER, UPPER (AG)	HB1-0282-000	11 - 13	KEY TOP, "STOP"
HA1-6142-000	27 - 5	COVER, LOWER (AG)	HB1-0284-000	17 - 4	SHAFT, CARRIAGE
HA1-6143-000	27 - 6	COVER, SCREW (AG)	HB1-0285-000	23 - 5	FRAME, PRINTER
HA1-6144-000	27 - 9	KEY TOP F (AG)	HB1-0286-020	17 - 1	GUIDE, CORNER
HA1-6221-000	8 - 4	SHAFT, BACK UP ROLLER	HB1-0287-000	21 - 8	ROLLER, PAPER FEED
HA1-6280-000	12 - 2	SHAFT, BACK UP ROLLER	HB1-0288-000	22 - 1	FRAM, CARRIAGE GUIDE
HA2-2128-000	1 - 10	HOLDER, HANDSET	HB1-0289-000	22 - 3	PLATE, PRESSURE
HA2-2725-000	2 - 5	LABEL, CARTRIDGE U2	HB1-0290-000	11 - 6	PLATE, GROUNDING
HA2-2726-000	2 - 4	LABEL, CARTRIDGE U1	HB1-0292-000	15 - 16	PLATE, GROUNDING
HA2-2727-000	10 - 11	LABEL, RECORDING PAPER CAUTION	HB1-0299-000	20 - 4	ROLLER, PAPER EJECT
HA2-2730-000	24 - 10	LABEL, RECORDING PAPER SET	HB1-0300-030	16 - 2	COVER, FOOTER SENSOR
HA9-0033-000	W - 1	RETAINING RING (E-TYPE)	HB1-0301-000	20 - 3	PLATEN
HB1-0105-000	17 - 2	HOLDER, CARRIAGE RIBBON CABLE	HB1-0302-000	23 - 4	GUIDE, PRESSURE PLATE
HB1-0113-000	19 - 5	BASE, CARRIAGE	HB1-0306-000	24 - 2	SHEET, FRICTION
HB1-0114-000	19 - 1	GUIDE, RIBBON CABLE		29 - 2	
HB1-0115-000	18 - 9	COVER, CARRIAGE TOP	HB1-0310-080	10 - 7	COVER, UPPER
HB1-0116-000	18 - 6	PIN, CARRIAGE	HB1-0311-000	10 - 1	PLATE, SPEAKER MOUNTING
HB1-0117-000	18 - 7	ARM, CARRIAGE	HB1-0313-000	10 - 3	GUIDE, DOCUMENT, LEFT
HB1-0212-000	1 - 4	TRAY, DOCUMENT	HB1-0314-000	10 - 4	GUIDE, DOCUMENT, RIGHT
HB1-0213-000	3 - 4	COVER, MODULAR	HB1-0317-000	9 - 11	FOOT, RUBBER
HB1-0214-080	3 - 2	COVER, BOTTOM	HB1-0319-020	5 - 2	TRAY, WASTE INK
HB1-0216-000	9 - 9	PLATE, INLET STOP	HB1-0320-000	5 - 3	ABSORBER, WASTE INK
HB1-0224-000	8 - 2	ARM, DETECTION	HB1-0346-000	11 - 14	KEY TOP, "ON HOOK"
HB1-0225-040	9 - 14	PLATE, PAPER RELEASE	HB1-0372-000	21 - 10	COVER, SENSOR
HB1-0231-000	6 - 1	COVER, DOCUMENT GUIDE, LOWER	HB1-0400-000	8 - 3	ROLLER, BACK UP
HB1-0232-000	6 - 3	ARM, DETECTION		12 - 6	
HB1-0233-000	6 - 2	ARM, DETECTION	HB1-1002-000	10 - 8	PLATE, PRESSURE
HB1-0235-000	13 - 6	ROLLER, SEPARATION	HB1-1003-000	9 - 15	GUIDE, PAPER PICKUP
HB1-0236-020	13 - 7	SHAFT, SEPARATION ROLLER	HB1-1008-000	10 - 9	PAD, FOAM RUBBER
HB1-0237-000	13 - 4	HOLDER, SEPARATION ROLLER	HB1-1010-000	1 - 3	TRAY, RECORDING PAPER
HB1-0238-000	13 - 8	SPACER	HB1-1030-020	10 - 10	INK ABSORBAR
HB1-0245-000	16 - 4	HOLDER, FOOTER SENSOR	HB1-1118-000	9 - 6	FRAME, MAIN
HB1-0246-000	15 - 6	ARM, TRANSMISSION	HB1-1121-000	12 - 12	ARM, SEPARATION GUIDE
HB1-0247-000	15 - 3	PLATE, GROUNDING	HB1-1125-000	29 - 5	COVER, CASSETTE
HB1-0248-000	8 - 6	SPRING, LEAF	HB1-1126-000	11 - 3	COVER, DISPLAY
HB1-0250-000	8 - 5	BRACKET	HB1-1129-000	9 - 2	PLATE, GROUNDING, RIGHT
HB1-0251-000	14 - 3	CLUTCH	HB1-1133-000	24 - 3	VELCRO PAD
HB1-0254-000	8 - 8	PLATE, SEPARATION GUIDE		29 - 3	
HB1-0255-000	8 - 11	SPRING, LEAF GROUNDING	HB1-1183-000	11 - 7	COVER, PANEL
HB1-0256-000	14 - 4	ROLLER, PICKUP	HB1-1188-000	11 - 1	COVER, BUTTON
HB1-0258-000	14 - 2	ROLLER, SPACER	HB1-1350-030	11 - 2	SHEET, OPRATION
HB1-0259-020	12 - 11	COVER, DOCUMENT GUIDE, UPPER	HB1-1357-000	6 - 9	PLATE, POSITIONING
HB1-0260-000	12 - 3	PLATE, PRESSURE	HB1-1395-000	1 - 7	SHEET, ONE-TOUCH DIAL
HB1-0261-020	12 - 4	PLATE, PRESSURE	HB1-1404-000	24 - 7	LABEL, CASSETTE PULL OUT
HB1-0262-000	4 - 6	BELT, STOPPER	HB1-1405-000	29 - 7	LABEL, CASSETTE PULL OUT
HB1-0263-000	12 - 13	SHEET WITH CABLE, GROUNDING	HB1-1651-000	12 - 5	SHEET, OPCNT INSULATOR

PART NUMBER	FIGURE & KEY No.	DESCRIPTION	PART NUMBER	FIGURE & KEY No.	DESCRIPTION
HF1-0913-000	6 - 8	LOCK, OPERATION PANEL UNIT	HH2-2359-000	9 - 8	CABLE WITH INLET
HF5-0011-030	3 - 3	RUBBER FOOT UNIT	HH2-2414-000	9 - 16	CABLE WITH CONNECTOR
HF5-0012-000	15 - 14	PLATE, GEAR SHAFT, LEFT	HH2-2484-000	1 - 2	MODULAR LINE CORD, 2W
HF5-0013-020	15 - 2	PLATE, GEAR SHAFT, RIGHT	HH2-2487-000	4 - 7	WIRE, GROUND
HF5-0015-000	7 - 8	PLATE, GROUNDING	HH2-2511-000	7 - 6	FLAT CABLE
HF5-0017-000	8 - 10	SEPARATION PAD UNIT	HH2-2512-000	7 - 5	FLAT CABLE
HF5-0028-000	8 - 7	PAPER GUIDE UNIT	HH3-5269-000	7 - 7	POWER SUPPLY UNIT
HF5-0095-000	9 - 10	LOWER COVER UNIT	HH4-2565-000	26 - 3	IC, M27C4001-12F1, EPROM
HF5-0097-000	24 - 1	PAPER LIFTING PLATE UNIT	HH7-1299-000	27 - 11	RINGER PKM34EW-12
	29 - 1		HH7-2036-000	21 - 3	MOTOR, PAPER FEED
HF5-0098-000	12 - 8	SEPARATION GUIDE UNIT	HH7-2037-000	15 - 1	PULSE MOTOR, READER
HF5-0099-000	29 - 4	CASSETTE FRAME UNIT	HH7-2038-000	10 - 2	SPEAKER
HF5-0100-000	24 - 4	FRAME, CASSETTE	HH7-2115-000	6 - 4	CONTACT SENSOR
HF5-0101-000	9 - 1	GROUNDING PLATE UNIT	HS1-0253-000	10 - 6	GEAR, 16T (POM)
HF5-0134-000	24 - 8	CASSETTE EXTENSION	HS1-0283-000	13 - 1	GEAR, 28T
HF5-0135-000	24 - 5	CASSETTE COVER UNIT	HS1-1063-000	9 - 5	BUSHING
HG1-2185-050	1 - 9	HANDSET ASS'Y (USA, AG)		13 - 2	
HG1-2196-000	27 - 10	TELCNT BOARD ASS'Y	HS1-2143-000	10 - 5	SPRING STAINLESS
HG1-4084-000	7 - 4	DRIVER BOARD ASS'Y	HS5-0023-000	13 - 3	GEAR, 21T
HG1-4085-000	7 - 3	NCU BOARD ASS'Y	HS5-0024-000	4 - 3	GEAR, 21T
HG1-4087-000	8 - 1	SENSOR BOARD ASS'Y		9 - 4	
HG1-4088-000	21 - 13	SENSOR BOARD ASS'Y	HS5-0025-000	15 - 13	GEAR, STEPPED
HG1-4090-000	7 - 1	RELAY BOARD ASS'Y	HS5-0026-000	15 - 12	GEAR, STEPPED
HG1-4095-000	19 - 4	CARRIAGE RIBBON CABLE ASS'Y	HS5-0027-000	15 - 4	GEAR, 36T
HG1-4108-000	16 - 3	SENSOR BOARD ASS'Y	HS5-0028-000	15 - 5	GEAR, 24T
HG1-4224-000	3 - 1	SCNT BOARD ASS'Y	HS5-0029-000	15 - 11	GEAR, 16T
HG1-4227-000	3 - 5	INTERFACE BOARD ASS'Y	HS5-0030-000	15 - 8	GEAR, 26T
HG1-4247-000	11 - 4	OPCNT BOARD ASS'Y	HS5-0031-000	15 - 9	GEAR, 23T
HG5-0057-000	9 - 3	EJECT ROLLER ASS'Y	HS5-0032-000	15 - 7	GEAR, STEPPED
HG5-0058-020	6 - 7	SEPARATION ROLLER ASS'Y	HS5-0033-000	14 - 5	GEAR, 31T
HG5-0062-000	9 - 7	PICK-UP ROLLER ASS'Y	HS5-0034-000	21 - 4	GEAR, STEPPED
HG5-0063-000	6 - 6	FEED ROLLER ASS'Y	HS5-0035-000	21 - 7	GEAR, 24T
HG5-0064-000	4 - 2	CS ROLLER ASS'Y	HS5-0036-000	21 - 5	GEAR, IDLER
HG5-0071-000	5 - 1	PRINTER ASS'Y	HS5-0039-000	13 - 5	GEAR, STEPPED
HG5-0072-000	16 - 1	PURGE UNIT	HS5-0040-000	13 - 10	GEAR, 35T
HG5-0075-000	20 - 7	PAPER FEED ROLLER ASS'Y	HS5-1006-000	4 - 4	BUSHING
HG5-0153-000	17 - 3	CARRIAGE UNIT	HS5-1007-000	14 - 1	BUSHING
HG5-0454-000	12 - 1	SEPARATION GUIDE ASS'Y	HS5-2011-000	15 - 15	SPRING, COIL
HG5-0456-000	4 - 1	OPERATION PANEL ASS'Y	HS5-2012-000	8 - 9	SPRING, COIL
HG5-0472-000	2 - 1	PRINTER COVER ASS'Y	HS5-2013-030	12 - 9	SPRING, COIL
HG5-0604-000	1 - 8	DRIVER SOFTWARE	HS5-2015-000	18 - 8	SPRING, HOOK AND COIL
HH2-1277-000	27 - 14	MODULAR JACK	HS5-2027-000	13 - 9	SPRING, CLUCH
HH2-1703-000	27 - 13	CORD, COILED (AG)	HS5-2030-000	9 - 13	SPRING, COIL
HH2-2297-000	3 - 9	CABLE WITH CONNECTOR, 7P	HS5-2035-000	15 - 17	SPRING, COIL
HH2-2341-000	8 - 12	CABLE WITH RING TONGUE		22 - 2	
HH2-2342-000	7 - 9	CABLE WITH RING TONGUE	HS5-2036-000	12 - 10	SPRING, COIL
HH2-2344-000	6 - 10	CABLE WITH RING TONGUE	HS5-2038-000	24 - 6	SPRING, PAPER LIFTING
HH2-2345-000	11 - 5	CABLE WITH RING TONGUE		29 - 6	
HH2-2348-000	7 - 2	FLAT CABLE	HS5-2039-000	9 - 17	SPRING, CASSETTE PRESS
HH2-2349-020	4 - 5	FALT CABLE	HS5-3004-000	20 - 5	PULLY
HH2-2350-000	3 - 6	FLAT CABLE	HS5-9004-000	S - 21	SCREW, STEPPED, M3
HH2-2351-000	6 - 5	CABLE WITH CONNECTER, 10P	HT1-2045-000	1 - 5	INSTRUCTION BOOK (ENG)
HH2-2358-000	21 - 12	CABLE WITH CONNECTOR, 2P	HT1-2047-000	1 - 6	INSTRUCTION BOOK, DRIVER(ENG)

PART NUMBER	FIGURE & KEY No.	DESCRIPTION	PART NUMBER	FIGURE & KEY No.	DESCRIPTION
HY7-2608-000	25 - 1	FUSE, 3.15A 125V	XB1-2300-605	S - 10	SCREW, MACHINE M3X6
QA2-0503-000	3 - 8	CAP. CONNECTOR	XB1-2300-607	S - 2	SCREW, BH3X6(S)
QB1-0411-000	23 - 3	ARM, PAPER SENSOR	XB1-2301-406	S - 23	SCREW, BH 3X14
QB1-0412-000	23 - 2	SPRING, TORSION	XB2-6400-607	S - 8	SCREW, WWASHER, M4X6(S)
QB1-0413-000	23 - 1	ARM, SENSOR	XB4-7200-609	S - 22	SCREW, M2X6
QB1-0417-000	20 - 1	BUSHING	XB4-7200-805	S - 9	SCREW, M2X8
	21 - 6		XB4-7260-809	S - 24	SCREW, FT, BH 2.6X8
QB1-0420-000	20 - 12	ARM, TRANSMISSION	XB4-7300-609	S - 11	SCREW, TAP, BINDING HEAD, M3X6
QB1-0421-000	20 - 10	SPRING, COIL	XB4-7300-807	S - 1	SCREW, TAP TIGHT, BINDING HEAD
QB1-0422-000	20 - 8	BUSHING	XB4-7300-809	S - 7	SCREW, TAP, BINDING HEAD, M3X8
	21 - 9		XB4-7301-007	S - 5	SCREW, TAP TIGHT BHM3X10
QB1-0423-000	20 - 2	SPRING, COIL	XB4-7301-207	S - 16	SCREW, BH M3X12, S
QB1-0425-000	20 - 11	GEAR, TRANSMISSION	XB5-6300-605	S - 4	SCREW, TP, PH3X6
QB1-0434-000	18 - 10	BELT, CARRIAGE	XD1-1104-118	W - 2	WASHER
QB1-0436-000	19 - 3	PAD, CONTACT	XD1-1104-139	W - 6	WASHER (S)
QB1-0437-000	18 - 2	LEVER, HOOKING	XD2-1100-402	W - 3	RETAINING RING (E-TYPE)
QB1-0438-000	18 - 4	HOOK, CARRIAGE	XD2-1100-642	W - 4	RETAINING RING (E-TYPE)
QB1-0439-000	18 - 3	SPRING, COIL	XD2-2300-202	W - 5	GRIP RING
QB1-0440-000	18 - 1	COVER, HOOK	XF9-0485-000	20 - 6	BELT, TRANSMISSION
QB1-0441-000	19 - 2	HOLDER, RIBBON CABLE (UPPER)	XH9-0091-000	9 - 12	RUBBER PAD
QB1-0443-000	18 - 5	WHEEL, CARRIAGE			
QB1-0500-000	21 - 2	GEAR, SLOW DOWN			
QB1-0501-020	23 - 6	ROLLER, IDLER			
QB1-0502-000	23 - 7	BRACKET, IDLER			
QB1-0503-000	23 - 8	SPRING, COIL			
QB1-0517-000	2 - 2	SPUR			
QB1-0518-000	2 - 3	SPUR SHAFT			
QB1-0622-000	20 - 9	WASHER, PLAIN			
QB1-0684-000	22 - 4	ROLLER, PRESSURE			
QH4-4038-000	21 - 1	MOTOR, CARRIAGE			
TKC-0953-000	30 - T1	GREASE FLOIL G311S (20GS)			
WC4-5052-000	21 - 11	MICRO SWITCH			
WK1-5047-000	26 - 1	LITHIUM BATTERY, CR2450HC22NC			
WR1-0086-000	27 - 15	MICROPHONE			
WR1-0111-000	27 - 12	SPEAKER DH-70C			
WS1-0172-000	26 - 2	PLUG, SHORT			
WS9-5038-000	3 - 7	SPACER, MODULAR			
WT2-0387-000	6 - 11	CLAMP			
WT2-0434-000	15 - 10	CLIP			
WT3-0057-000	1 - 1	POWER SUPPLY CORD 125V			
XA1-7260-407	S - 6	SCREW, PH2.6X4			
XA9-0258-000	S - 13	SCREW, BINDING HEAD MACHINE			
XA9-0289-000	S - 18	SCREW M3 L7.2			
XA9-0318-000	S - 19	SCREW, TAP, PH2.6X8			
XA9-0476-000	S - 20	SCREW, TP M3X8			
XA9-0587-000	24 - 9	SCREW, M3X8			
XA9-0613-000	20 - 13	NUT, SUS			
XA9-0686-000	S - 17	SCREW, M3x6			
XA9-0718-000	1 - 11	SCREW, HANDSET HOLDER			
XA9-0735-000	S - 15	SCREW, STEPPED, M3X10			
XA9-0759-000	S - 3	SCREW, PH3X10			
XA9-0806-000	S - 14	SCREW, BINDING HEAD MACHINE			
XB1-2300-407	S - 12	SCREW, M3X4			



Printed on paper that
contains 50% reused paper.

Canon



HY8-39A4-000

FAX-B360IF PARTS CATALOG



Q'TY 1

00001